



臺北  
表演藝術  
中心

TAIPEI  
PERFORMING ARTS CENTER

Grand Theatre

(GT)

Technical Information

# Contents

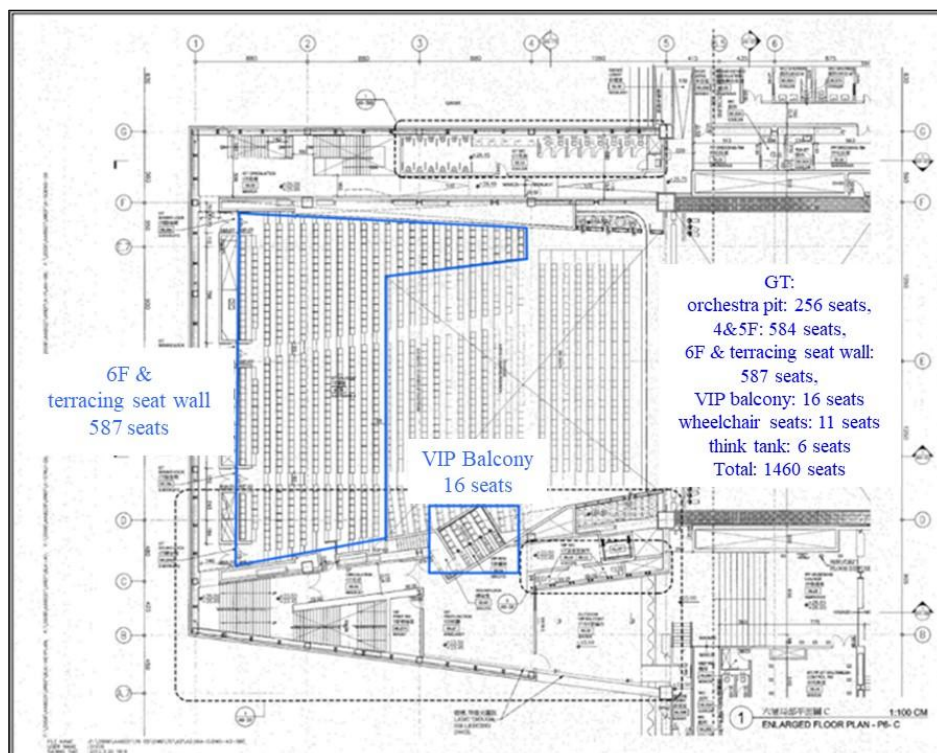
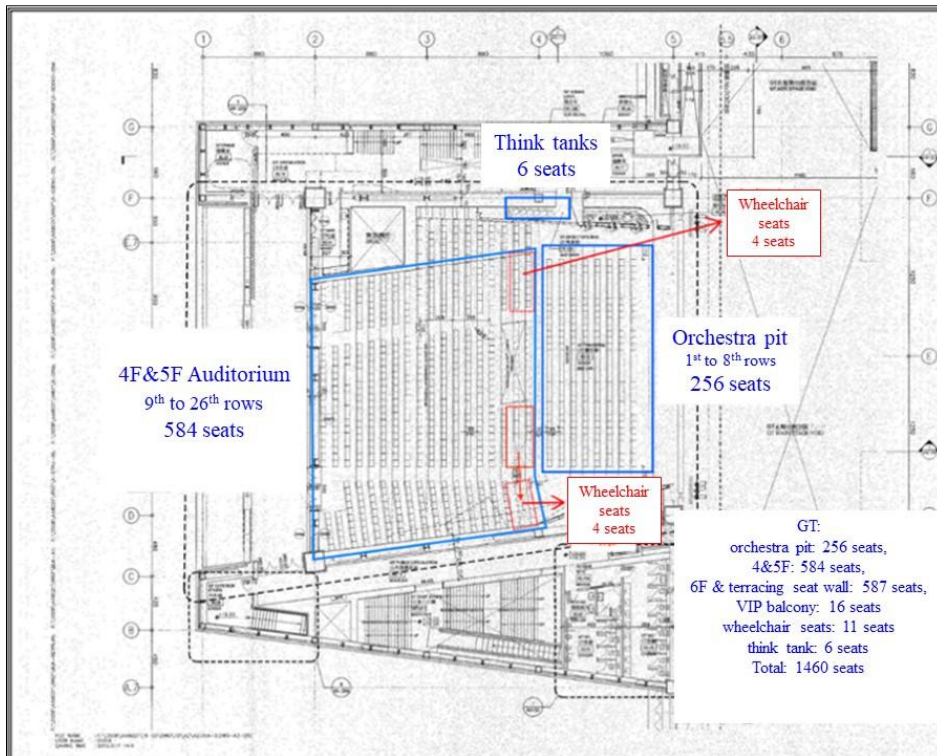
Grand Theatre / GT .....	2
Load-in Gate and Scenery Shipping Path .....	3
Load-in Path.....	3
Load-in area .....	4
Load-in Entrance.....	4
Scenery Shipping Path .....	5
Stage Specifications .....	7
Stage Equipment .....	9
Lighting Specifications .....	18
Lighting Systems.....	18
Lighting Equipment .....	19
Lighting Cable and Accessories .....	23
Dimmer circuits layout chart.....	26
House Light.....	30
Standard Light Plan.....	31
Audio Specification.....	32
Speaker System Dispose Chart .....	36
Channel Dispose Chart.....	38
Panel Layout .....	39
Other Equipments & Dressing Room .....	40
Other Equipments .....	40
List of Dressing room.....	40

# Grand Theatre / GT

- The stage floor of the GT is on the 4<sup>th</sup> floor

The stage platform contains the main stage, side stages and rear stage

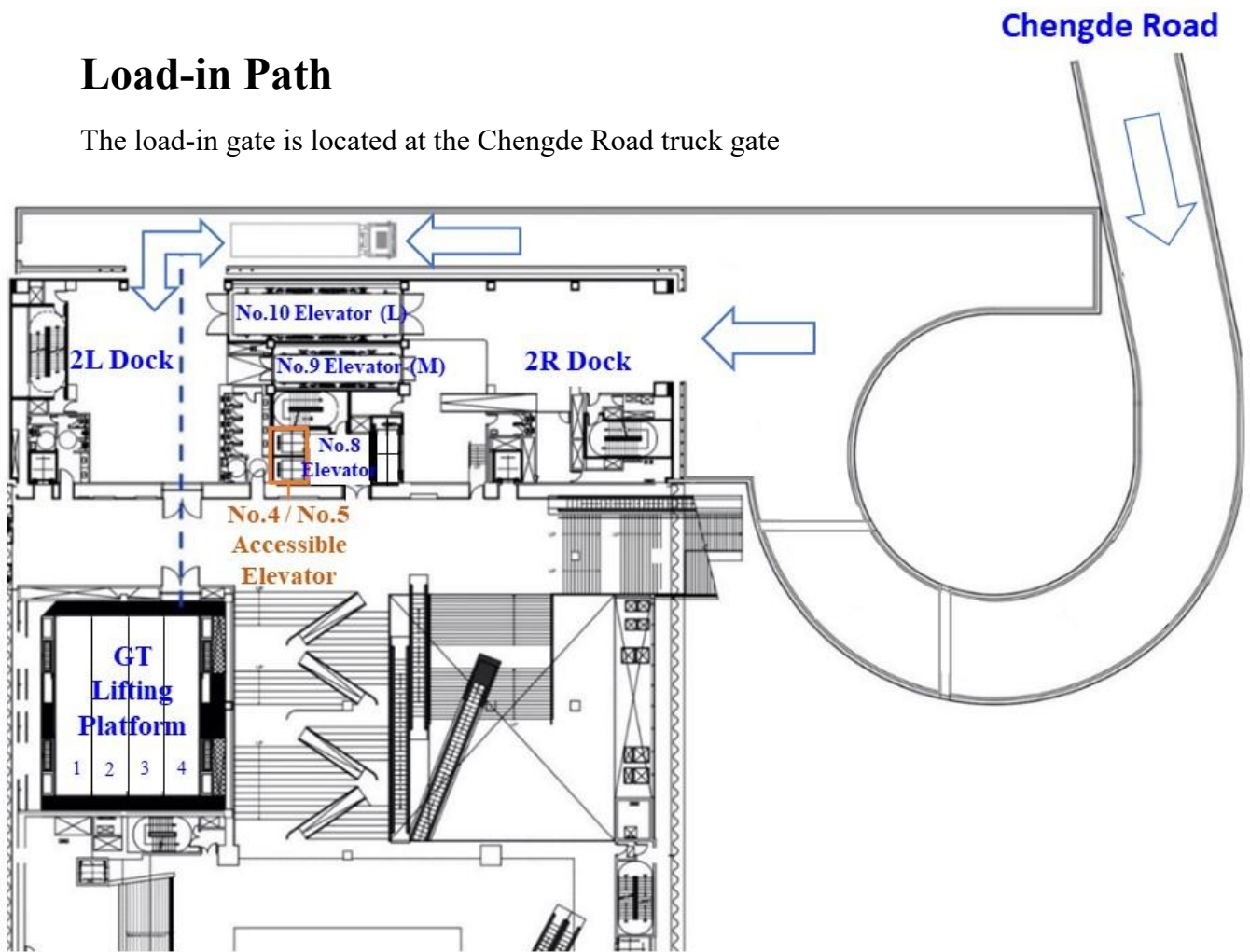
Grand theatre have 1,460 seats, comprising orchestra pit 256 seats, 4F&5F(Stalls) total 584 seats, 6F(Circle) & terracing seat wall in total 587 seats, VIP balcony 16 seats, wheelchair seat 11 seats, think tank 6 seats.



# Load-in Gate and Scenery Shipping Path

## Load-in Path

The load-in gate is located at the Chengde Road truck gate

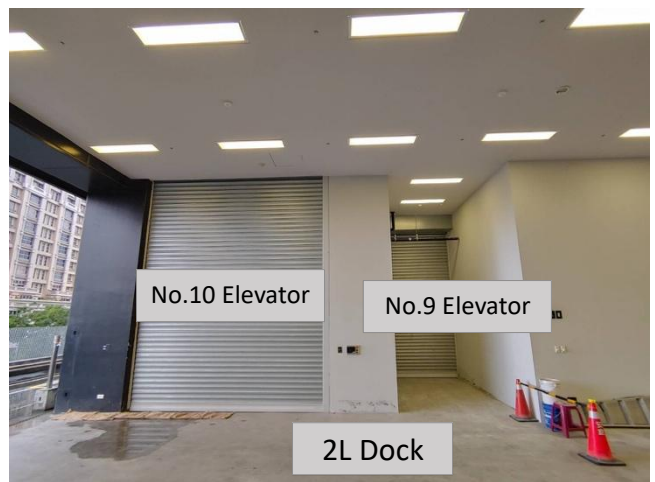
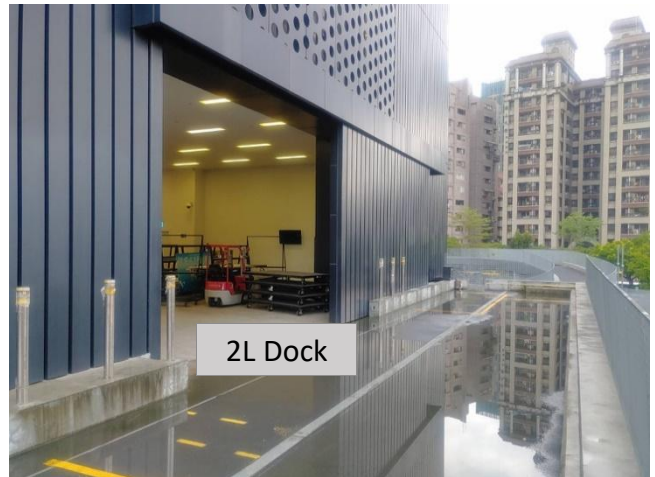
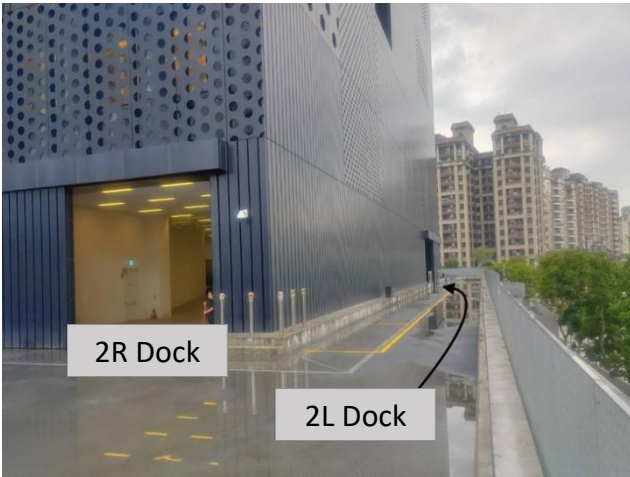


Dimension of lane : 810 cm (W)

Dimension of the load-in path of the GT: 408 cm (W) x 437 cm (H)



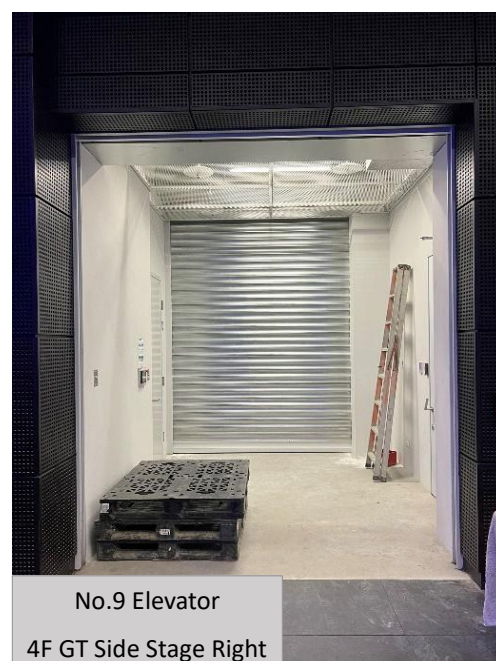
## Load-in area



## Load-in Entrance

Dimension of **No. 10 Elevator** entrance(4F) : **390** cm (W) × **340** cm (H)

Dimension of **No. 9 Elevator** entrance(4F) : **250** cm (W) × **290** cm (H)



## Scenery Shipping Path

**Lifting Platform** ( only 3<sup>th</sup> & 4<sup>th</sup> platform can descent to 2F load-in dock )

Dimension for one platform : 1500 cm ( L ) × 300 cm ( W )

Amount : 2

Maximum load : 9000 kg · 200 kg/m<sup>2</sup>

Floors to Reach : 2F : Single-Entrance/Driveway Level/load-in dock

4F : GT Stage Floor

Entrance : 280 cm (W) x 290 cm (H)



### **No. 10 Elevator**

Dimension : 1405 cm ( L ) × 340 cm ( W ) × 400 cm ( H )

Maximum load : 25000 kg

Floors to Reach : 2F : Double Entrance/Driveway Level

4F : Double Entrance/GT/BB Stage Floor

7F : Single Entrance/GP Stage Floor

**No. 9 Elevator**

Dimension : 1042 cm ( L ) × 210 cm ( W ) × 260 cm ( H )

Maximum load : 8000 kg

Floors to Reach : 2F : Double Entrance / Driveway Level

3F : Single Entrance / Music Instrument Store room 200 (W) x 210 (H)/

GT Orchestra Pit 95 (W) x 200 (H)

4F : Double Entrance /GT/BB Stage Floor

5F : Single Entrance / Dressing Room

6F : Double Entrance / Dressing Room 147 (W) x 199 (H) /BB Grid/

GP Orchestra Pit

7F : Single Entrance /GP Stage Floor

**No. 8 Elevator**

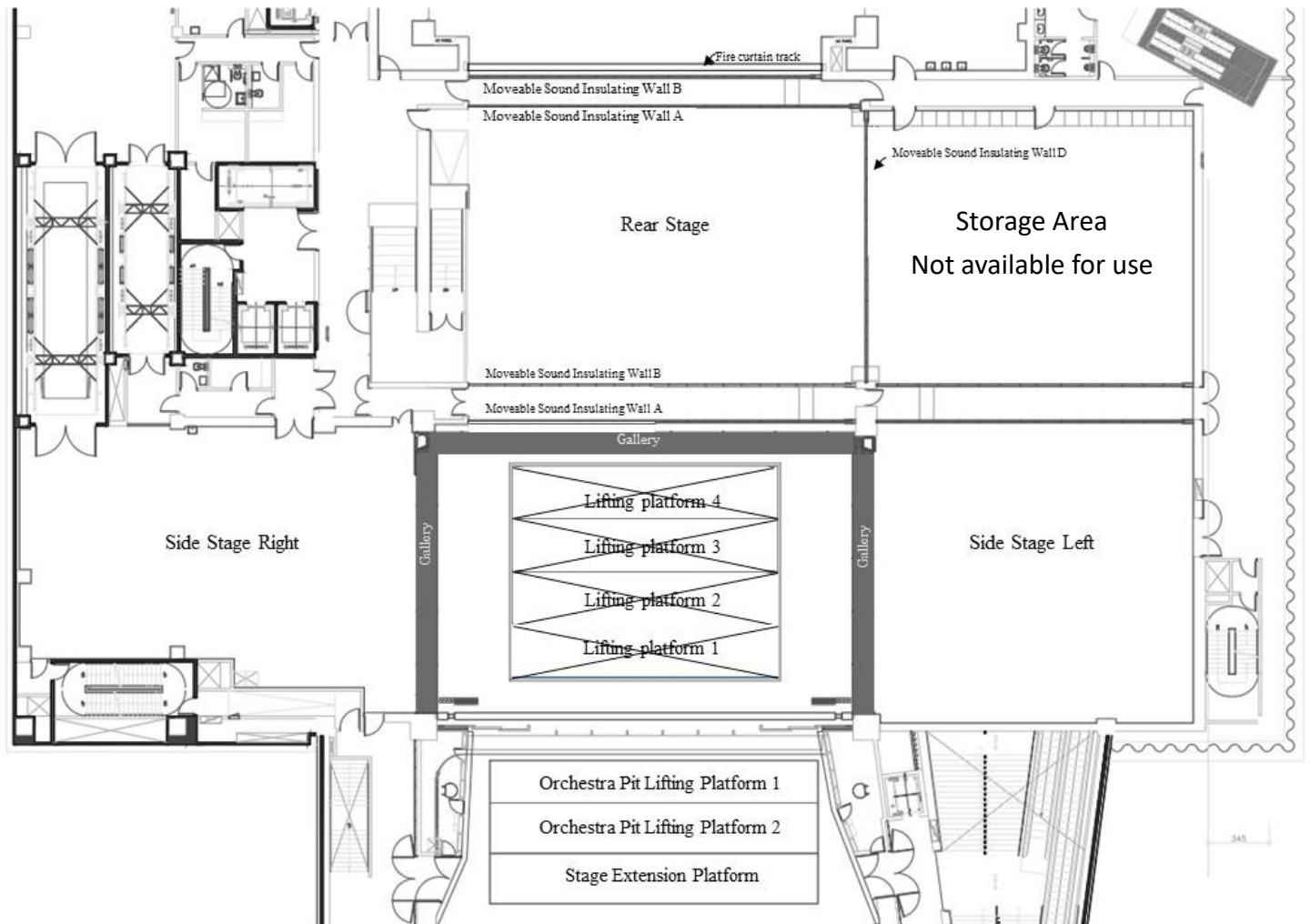
Dimension : 400 cm ( L ) × 170 cm ( W ) × 230 cm ( H )

Maximum load : 3000 kg

Floors to Reach : B1~12F

# Stage Specifications

## Stage Dimension



- i. Main Stage: Adjustable Proscenium : 1300 cm ~ 2000 cm  
Proscenium to 1<sup>st</sup> Acoustic wall : 1706 cm
- ii. Side Stage Left : 1905 cm ( W ) × 1682 cm ( D )
- iii. Side Stage Right : 2345 cm ( W ) × 1437.5 cm ( D )
- iv. Cross Over : 2190 cm ( W ) × 190 cm ( D )
- v. Rear Stage : 2190 cm ( W ) × 1535 cm ( D )
- vi. Orchestra Pit Platform : (Comprising from 2 platforms which can be used independently)
  - Orchestra Pit Platform 1 : 1852 cm ( W ) × 240 cm ( D )
  - Orchestra Pit Platform 2 : 1852 cm ( W ) × 285 cm ( D )
  - Maximum load : Static Load : 500 kg/m<sup>2</sup> ; Dynamic Load : 200 kg/m<sup>2</sup>
- vii. Stage Extension Platform :
  - Dimension : 1852 cm ( W ) × 285 cm ( D )
  - Maximum load : Static Load : 500 kg/m<sup>2</sup> ; Dynamic Load : 200 kg/ m<sup>2</sup>
- viii. Floor Surface : Black painted 3-ply plywood/45 mm, Loads Capacity : 750 kg/ m<sup>2</sup>

## Stage Galleries

6<sup>th</sup> Floor Gallery : Height from Stage Floor : 980 cm · Stage L/R · Width : 100 cm

7<sup>th</sup> Floor Gallery : Height from Stage Floor : 1500 cm · Stage L/R/Up Stage ·  
Width : 100 cm

8<sup>th</sup> Floor Gallery : Height from Stage Floor : 2000 cm · Stage L/R/Up Stage ·  
Width : 100 cm

## Grid (10F)

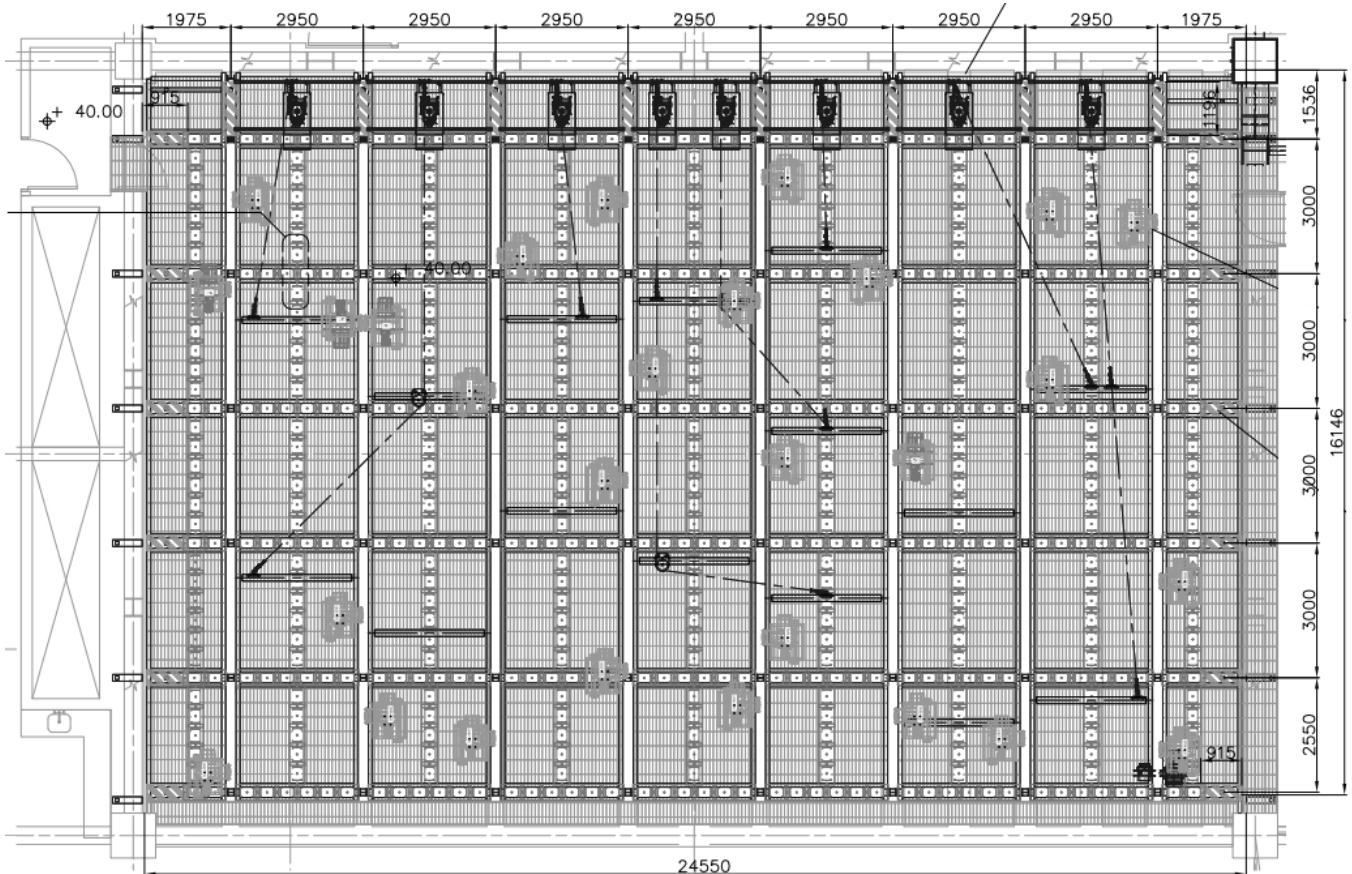
Height from Stage Floor : 2465 cm · Floorage : 2450 cm × 1675 cm

Provide 6 Point Hoists ( Please refer to “Other Stage Equipment” )

Loads Capacity : 150 kg/m<sup>2</sup>

Constructed with Movable I-Beam for extra hanging point, Loads Capacity : 1200 kg

**For other extra hanging point added by the hirer, assessment by TPAC staff will be needed. Please provide hanging plan include calculation based on the data from the TPAC structural computation statement.**



# Stage Equipment

## Lifting platform

Amount : 4

Dimension : 1500 cm ( L ) × 300 cm ( W )

Travel Distance : 1<sup>st</sup> / 2<sup>nd</sup> platform : 600 cm, (from stage floor) +297 ~ -300 cm

3<sup>th</sup> / 4<sup>th</sup> platform : 1570 cm, (from stage floor) +297 ~ -1270 cm

Loads Capacity : Maximum 9000 kg each

Dynamic Load : 200 kg/m<sup>2</sup>

Static Load : (upper level) 750 kg/m<sup>2</sup> · (lower level) : 500 kg/m<sup>2</sup> °

**Notes : When the lifting platform is 1M lowered than stage floor, the safety railing will be raised automatically**

## Orchestra Pit Lifting Platform

Amount : 2

**Not movable during performance**

### Orchestra Pit Lifting Platform 1

Dimension : 1850 cm ( L ) × 240 cm ( W )

Travel Distance : Descent Maximum Distance -450 cm

Ascent Maximum Distance is **Flush with Stage Floor**

Maximum load : Dynamic Load : 200 kg/m<sup>2</sup>

Static Load : 500 kg/m<sup>2</sup>

### Orchestra Pit Lifting Platform 2

Dimension : 1850 cm ( L ) × 285 cm ( W )

Travel Distance : Descent Maximum Distance -400 cm

Ascent Maximum Distance is **Flush with Stage Floor**

Maximum load : Dynamic Load : 200 kg/m<sup>2</sup>

Static Load : 500 kg/m<sup>2</sup>

## Stage Extension Platform

Dimension : **1850** cm ( L ) × **285** cm ( W )

Travel Distance : Descent Maximum Distance **-69** cm

Ascent Maximum Distance is **Flush with Stage Floor**

Maximum load : Dynamic Load : **200** kg/m<sup>2</sup>

Static Load : **500** kg/ m<sup>2</sup>

## Adjustable Proscenium

3 pieces on Each Side · 6 pieces in total

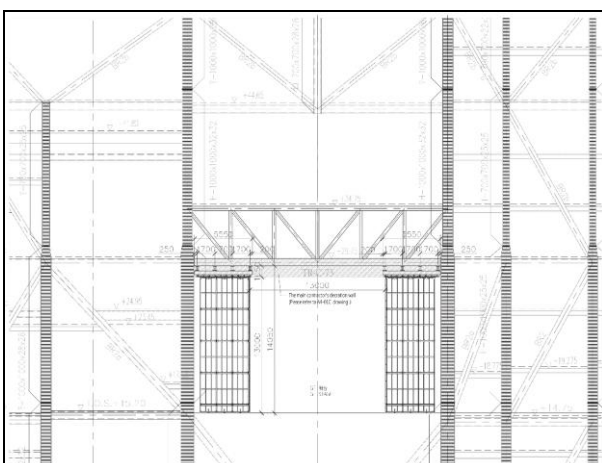
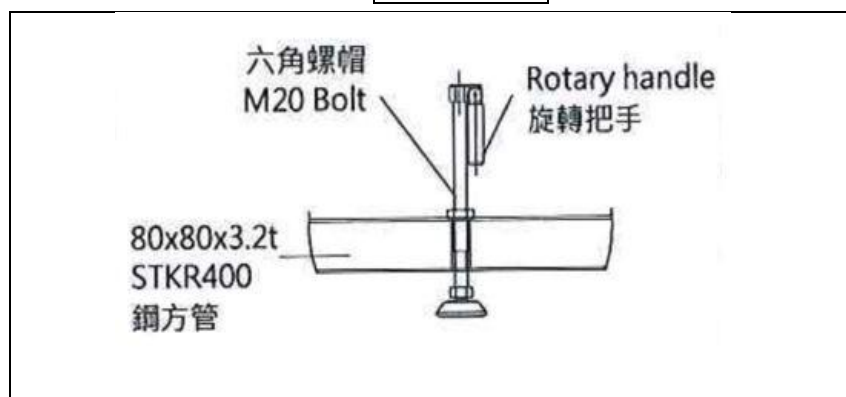
Height : **1365** cm · Width : **165** cm (Each Piece)

Thickness : **35** cm (Up Stage ) and **10** cm (Two pieces at down stage)

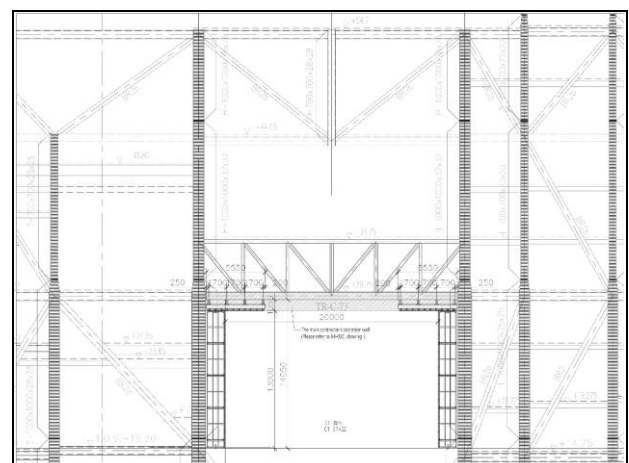
Opening : **1300** cm ~ **2000** cm

Operating : manual operation

Manual holder



GT Proscenium Opening Minimum



GT Proscenium Opening Maximum

## Rigging System

### i. Fly bar

- Main Stage

Type : Motorized variable speed fly bar

Amount : 57

(G57 is too close to upstage gallery, for safety precautions, maximum out depth is 14m)

Bar spacing : 25 cm

Length : 2150 cm

(With 100 cm extension bar on both sides)

( over 80 cm will collide with gallery )

( over 30 cm will collide with side bar )

Ø Diameter : 4.83 cm

G02 : Lifting House Curtain

Loads Capacity : G02 to G57 : 500 kg · 100 kg/m

Extension bar : 50 kg

Travel Distance : G01: (**From Stage floor**) +100 cm ~ +2150 cm

G02-G56: (**From Stage floor**) +100 cm ~ +2300 cm

G57: (**From Stage floor**) +100 cm ~ +1400 cm

Speed : 0.012-1.2 m/s

- Side Bar

Type : Motorized fixed speed fly bar

Amonut : 4 · 2 on each side

Length : 600 cm (With 100 cm extension bar on both sides)

Ø Diameter : 4.83 cm

Loads Capacity : 400 kg · 100 kg/m · Extension bar : 50 kg

Travel Distance : (**From Stage floor**) +100 cm ~ +2300 cm

Speed : 0.5 m/s

- Up Stage below the gallery

Type : Motorized fixed speed fly bar

Amount : 2

Length : 2150 cm (With 100 cm extension bar on both sides)

Ø Diameter : 4.83 cm

Loads Capacity : 700 kg · 100 kg/m · Extension bar : 50 kg

Travel Distance : (**From Stage floor**) +100 cm ~ +1250 cm

Speed : 0.5 m/s

- **Front of House (Above Orchestra Pit)**

Type : Motorized fixed speed fly bar

Amount : 4

Length : 1800 m

(With 100 cm extension bars on both sides)

∅ Diameter : 4.83 cm

Loads Capacity : 500 kg · 100 kg/m · Extension bar : 50 kg

Travel Distance : (**From Stage floor**) +100 cm ~ +1100 cm

Speed : 0.5 m/s

- ii. **Proscenium Fire curtain**

2150 cm(W) × 1350 cm(H) · Thickness : 40 cm, Distance from Apron 60 cm

Height : (**From Stage floor**) +960 cm

\*When fire alarm is being triggered, fire Curtain will descent with alarm.

\*Items that cannot be removed within 1 minute must not be placed under the fire curtain

- iii. **Light Bridge**

Dimension : 2000 cm (W) × 360 cm (H) × 100 cm ( D )

Travel Distance : Measure with the header of the Lighting Bridge

(**From Stage floor**) + 800 cm ~ + 1150 cm

The hanging position is 2m higher than the lower edge of the lighting bridge header.

When the lighting bridge header is 8m height form the stage floor, the hanging position will be 10m height from the stage floor.

- iv. **G02 Lifting House Curtain**

G02 Black Curtain as Lifting House Curtain.

Dimension : 2190 cm (W) × 1190 cm ( H )

- v. **Teaser**

In front of the Lighting Bridge · hard structure

2000 cm ( W ) × 460 cm ( D ) Thickness : 5 cm

Travel Distance : (**From Stage floor**) + 500 cm ~ + 950 cm

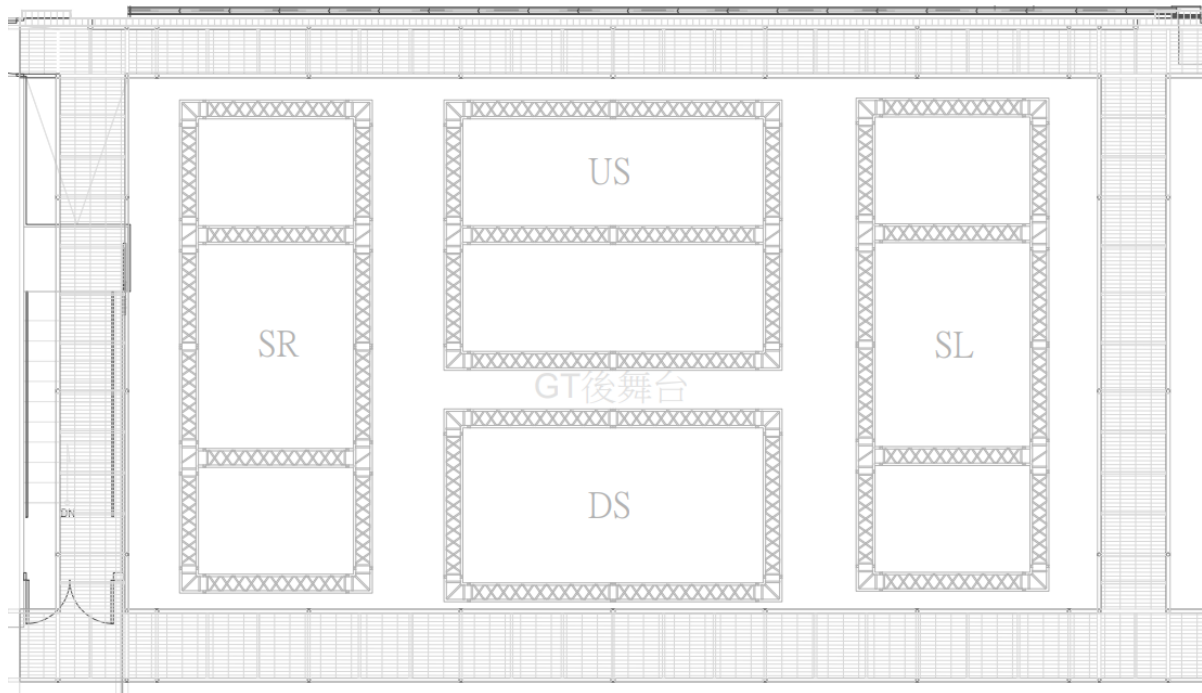
**vi. Rear Stage Truss**

4 Group of Truss named : US 、 DS 、 SR 、 SL, **Not movable during performance.**

Travel Distance : **(From Stage floor)** + 50 cm ~ + 1040 cm

Loads Capacity : US 、 DS 1600 kg

SR 、 SL 3200 kg



**vii. Public Arts Curtain**

**▲ Only Traveler**

**Travel by track from Stage Right to Stage Left**

Material : Curtain : Gerriets Fiberglass Curtain, Model : Woven glass quality 96105, Blue

Inside : Gerriets polyester Curtain, Model : Night 300, White

Traveler Distance : From SR to SL, Open 0 cm · Close 2035 cm

Maximum Speed : 0.6 m/s

## Hanging List

Fly Bar to Edge of Apron :

No.	To Apron ( cm )	No.	To Apron ( cm )	No.	To Apron ( cm )
<b>Front 01</b>	385	<b>G18</b>	741	<b>G39</b>	1266
<b>Front 02</b>	335	<b>G19</b>	766	<b>G40</b>	1291
<b>Front 03</b>	285	<b>G20</b>	791	<b>G41</b>	1316
<b>Front 04</b>	235	<b>G21</b>	816	<b>G42</b>	1341
<b>G01</b>	316	<b>G22</b>	841	<b>G43</b>	1366
<b>G02</b>	341	<b>G23</b>	866	<b>G44</b>	1391
<b>G03</b>	366	<b>G24</b>	891	<b>G45</b>	1416
<b>G04</b>	391	<b>G25</b>	916	<b>G46</b>	1441
<b>G05</b>	416	<b>G26</b>	941	<b>G47</b>	1466
<b>G06</b>	441	<b>G27</b>	966	<b>G48</b>	1491
<b>G07</b>	466	<b>G28</b>	991	<b>G49</b>	1516
<b>G08</b>	491	<b>G29</b>	1016	<b>G50</b>	1541
<b>G09</b>	516	<b>G30</b>	1041	<b>G51</b>	1566
<b>G10</b>	541	<b>G31</b>	1066	<b>G52</b>	1591
<b>G11</b>	566	<b>G32</b>	1091	<b>G53</b>	1616
<b>G12</b>	591	<b>G33</b>	1116	<b>G54</b>	1641
<b>G13</b>	616	<b>G34</b>	1141	<b>G55</b>	1666
<b>G14</b>	641	<b>G35</b>	1166	<b>G56</b>	1691
<b>G15</b>	666	<b>G36</b>	1191	<b>G57</b>	1716
<b>G16</b>	691	<b>G37</b>	1216	<b>US Gallery 01</b>	1757.5
<b>G17</b>	716	<b>G38</b>	1241	<b>US Gallery 02</b>	1837.5

## Other Stage Equipment

### i. Point Hoist :

- Fixed 4kN Variable speed point hoist  
Amount : 8 **(Not available currently)**  
Dimension : 200 cm×100 cm×80 cm  
Loads Capacity : **400** kg  
Travel Distance : **(From Stage floor)**+100 cm ~ +2500 cm  
Speed : 0.012 ~ 1.2 m/s  
Max acceleration : 0.6 m/s<sup>2</sup>
- Flexible 2.5kN Variable speed point hoist  
Amount : 4  
Dimension : 140 cm×100 cm×80 cm  
Loads Capacity : **250** kg  
Travel Distance : **(From Stage floor)**+100 cm ~ +2500 cm  
Speed : 0.012 ~ 1.2 m/s  
Max acceleration : 0.6 m/s<sup>2</sup>

### ii. GIS Variable speed chain hoist

Amount : 6  
Loads Capacity : **500** kg  
Speed : 0.02 ~ 0.3 m/min

iii. **List of Drapery :**

No.	Item	Size(m)	Color/Material	Amount	Note
1	Leg	450 cm ( W ) × 1200 cm ( H )	Black	8 pairs	
2	Border	2200 cm ( W ) × 400 cm ( H )	Black	8	
3	Backdrop	1100 cm ( W ) x 1200 cm ( H )	Black	2	
4	Gauze Curtain	2000 cm ( W ) × 1000 cm ( H )	<b>Gerriets</b> Black 6 point sharktooth Falstaff	1	chargeable items
5	Gauze Curtain	2000 cm ( W ) × 1000 cm ( H )	<b>Gerriets</b> White Vision Gauze PARSIFAL	1	Not available currently
6	Rear Projection Screen	1800 cm ( W ) × 1100 cm ( H )	<b>Gerriets GmbH</b> Black / PVC SHOWR 2.2 anthracite	1	chargeable items
7	Rear Projection Screen	2100 cm ( W ) × 1200 cm ( H )	<b>Gerriets GmbH</b> Creamy White / PVC Prospekt OPERA Creamy white	1	chargeable items
8	Rear Projection Screen	2100 cm ( W ) × 1200 cm ( H )	<b>Gerriets GmbH</b> Light Grey / PVC Prospekt STUDIO 200 gn	1	chargeable items

iv. **Other Stage Accessories**

No	Item	Size	Amount	Note
1	Aluminum A Frame Ladder	6 ft	2	
2	Marley (Dance floor)	100cm ( W ) × 2000cm ( L )	28	*Reversible. *Choice of Black/White *With 4 trailers
3	Black board	4 ft x 8ft	15	
4	Aluminum Bottom Pipe	1m	2	Silver / Light
		2m	2	
		3m	30	
5	Aluminum Bottom Pipe protect kit (male)		15	
6	Aluminum Bottom Pipe protect kit (female)		15	

7	Black Bottom Pipe	1m	10	3.2kg/piece
		3m	30	8.2 kg/piece
8	Pipe and Accessories:			
	Pipe	1m	20	
		2m	20	
	Joint Inner tube		35	
Screw sets (Lead screw & nut)		170 sets		
9	Movable Platform Ladder	Platform 1.92m (H)	2	
10	Aluminum alloy Scaffold Tower:			
	Double Width 5 Rung Span Frame	134cm(W) x 207cm(H)	6	
	Double Width 2 Rung Span Frame	134cm(W) x 70.5cm(H)	2	
	Horizontal Brace	198	10	
	Diagonal Brace	218.5	12	
	6' Fixed Platform		5	
	40cm leveling feet and 8" Wheels		4 sets	Wheel Height 32 cm Adjustable height 33 cm
	Outrigger		4	
	Staircase		3	
8	Track and Accessories			
	Channel	1m	2	
		2m	4	
		3m	4	
	Hand Live	70m	1	
	Single Carrier		60	
	Master Carrier		2	
	Dead End Pulley		2	
	Live End Pulley		1	
	End Stop		4	
	Adjustable Floor Pulley		1	
	Joint		16	
	Spileing Clamp set (Spileing Clamp*2 Pipe Clamp *2 Clinch bolt set*3)		8	
	Center Pipe Supports set (Pipe Clamp*2 Hanging Clamp*2 Clinch bolt set*3)		22	

# Lighting Specifications

## Lighting Systems

### 1. Network system

- Signal transmission method: transfer to DMX system by sACN communication protocol
- In-wall wiring specification CAT.6 type
- Domain CLASS B type, can use domain segment **10.0.10.51~100**
- Can provide mobile NET→DMX signal converter

### 2. Dimmer and Voltage specification

- Brand/Type : Strand Lighting / EC21
- Voltage: 380V/220V
- 3kw SCR dimming module Max Loading Amp of a single loop: 16A
- 3kw relay module Max Loading Amp of a single loop: 16A
- 5kw SCR dimming module Max Loading Amp of a single loop: 25A
- Signal types that can be received by the signal input terminal: SHOWNET/DMX512

### 3. Additional Power Supply

- Location: Down stage left Near Proscenium wall
- Total current load: 400A
- Voltage 3 $\phi$  4 wires +G 380V/220V
- 63A CEE Connector:  
3  $\phi$  4+G Total Load 75A X2
- US standard quick connector:  
(CamLock Connector)  
3  $\phi$  4+G total load 400A



## Lighting Equipment

### 1. Equipment List

NO.	Item & Type	Total	Location	Amount	Note
1	Lighting console grandMA 2 full-size	1	Side Stage		
2	Lighting console grandMA 3 full-size	1	Control room		
3	Backup / Playback controller grand-MA 2 Replay Unit	1	Control room		
4	Lighting console ETC XE	1	Storage room		*Chargeable items *Subject to availability
5	3KW 6 Circuits Spring Cable Reels Conductix Wampfler SR40.3PA.13GB090+2(2UC)	24	Grid		*Operate under staff assistance for safety precaution
6	5KW 4 Circuits Spring Cable Reels Conductix Wampfler SR60.3PA.9GD090+2(2UC)	4	Grid		* Speed limit 20cm/sec * No movement during performance
7	Ellipsoidal reflector spotlight 5° ETC Source Four 5°	6	#2 Catwalk	6	
8	Ellipsoidal reflector spotlight 10° ETC Source Four 10°	32	#2 Catwalk	16	
			#3 Catwalk	16	
9	LED Profile <a href="#">ETC Source Four LED Series 3 10°</a>	32	#2 Catwalk	16	Choice of 5° Lens (8 pieces)
			#3 Catwalk	16	Choice of 5° Lens (8 pieces)
10	LED Profile <a href="#">ETC Source Four LED Series 3 14°</a>	10	#1 Catwalk	10	
11	LED Profile <a href="#">ETC Source Four LED Series 3 26°</a>	24	Box Room	24	
12	Ellipsoidal reflector spotlight 14° Selecon SPX 14°	14	#1 Catwalk	14	
13	Ellipsoidal reflector spotlight 19° Selecon SPX 19°	46	Bridge	6	
			Side Stage	40	
14	Ellipsoidal reflector spotlight 26° Selecon SPX 26°	96	Bridge	16	
			Side stage	80	
15	Ellipsoidal reflector spotlight 36° Selecon SPX 36°	80	Side Stage	80	
16	Ellipsoidal reflector spotlight 50° Selecon SPX 50°	10	Side Stage	10	

17	parabolic aluminized reflector light PAR64 KUPO PAR-64LB-UL	48	Lighting Trailer	VN *12	lamp change is not available
				N *12	
				M*12	
				W *12	
18	ROBE <a href="#">T11 Profile 5°~50°</a>	162	Ladder	30	Gobo size: 26.8mm Image size: 23.5mm Thickness:1.1mm Maximum Thickness: 4.0mm High-temperature resistance Glass gobo only
			Light Tower	48	
			Side Stage	84	
19	LED Pixel Wash <a href="#">ROBE Spiider</a>	14	Side Stage		
20	LED PAR <a href="#">Clay Paky Mini-B ParLED Aqua</a>	48	Side stage		
21	LED CYC <a href="#">Chauvet Ovation CYC 1 FC</a>	24	Side Stage		
22	Fresnel 2 kw Selecon Arena Theatre Fresnel 2 kw	30	Side stage		Barndoor*20
23	Fresnel 5 kw ARRI ST5 Fresnel 5kw	11	Storage room		*Subject to availability The equipments are shared among 3 venues
24	Asymmetrical reflector 4-Way square Cyc (1 kw X 4) Selecon Aurora 4-way square	16	Work light	2	Side stage work light
			Side stage	14	
25	Asymmetrical reflector 4-Way batten Groundrow (1 kw X 4) Selecon Aurora 10AUGRD4	14	Side stage		
26	Followspot <a href="#">ARTHUR-1014 800W LED</a>	3	Follow Room		
27	Fog Machine Fazer Antari F-4	2	Store Room		chargeable items (With DMX Fan)
28	Hazer Antari HZ-1000	2	Store Room		chargeable items (With DMX Fan)
29	Hazer Antari HZ-500	4	Store Room		chargeable items *Subject to availability

## 2.Side light Tower

Type : Truss ( stackable )

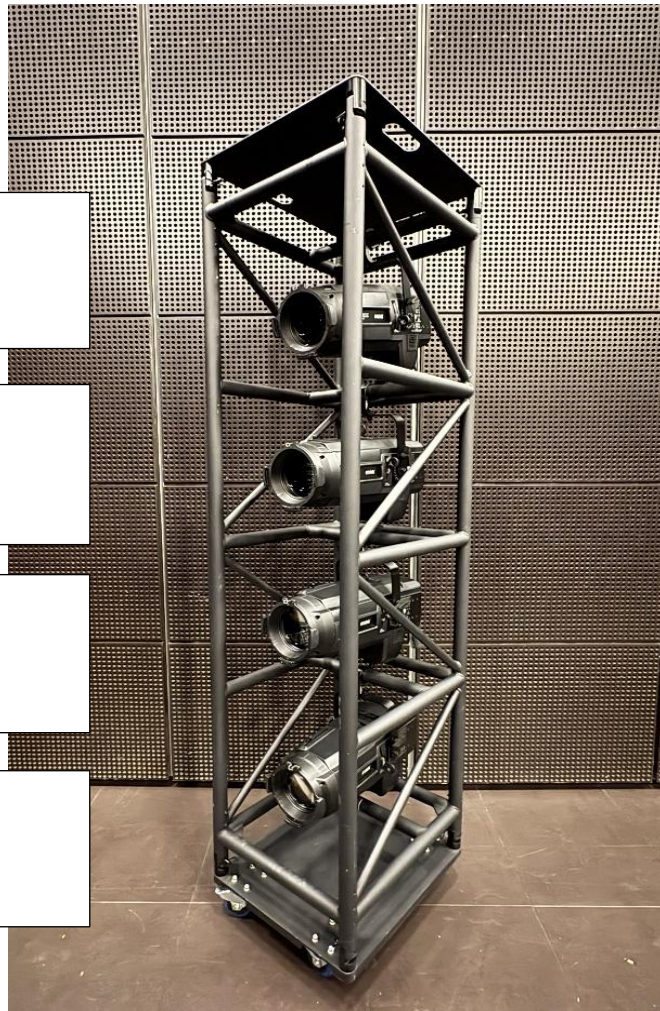
Dimension : (L)60cm × (W) 50cm × (H)230cm

Base Dimension : (L)70cm × (W)60cm

Base weight : 100kg

Amount : 12

- ROBE T11 Profile 5°~50°  
Heighg from floor : 218cm  
(include wheel ≅ 12cm)
- ROBE T11 Profile 5°~50°  
Heighg from floor : 161cm  
(include wheel ≅ 12cm)
- ROBE T11 Profile 5°~50°  
Heighg from floor : 106cm  
(include wheel ≅ 12cm)
- ROBE T11 Profile 5°~50°  
Heighg from floor : 51cm  
(include wheel ≅ 12cm)



Specified clamp is required for additional lamp:  
KUPO 2" SLIM HANDCUFF COUPLER (T Knob)

Type: KCP-828B-T

Amount : 20

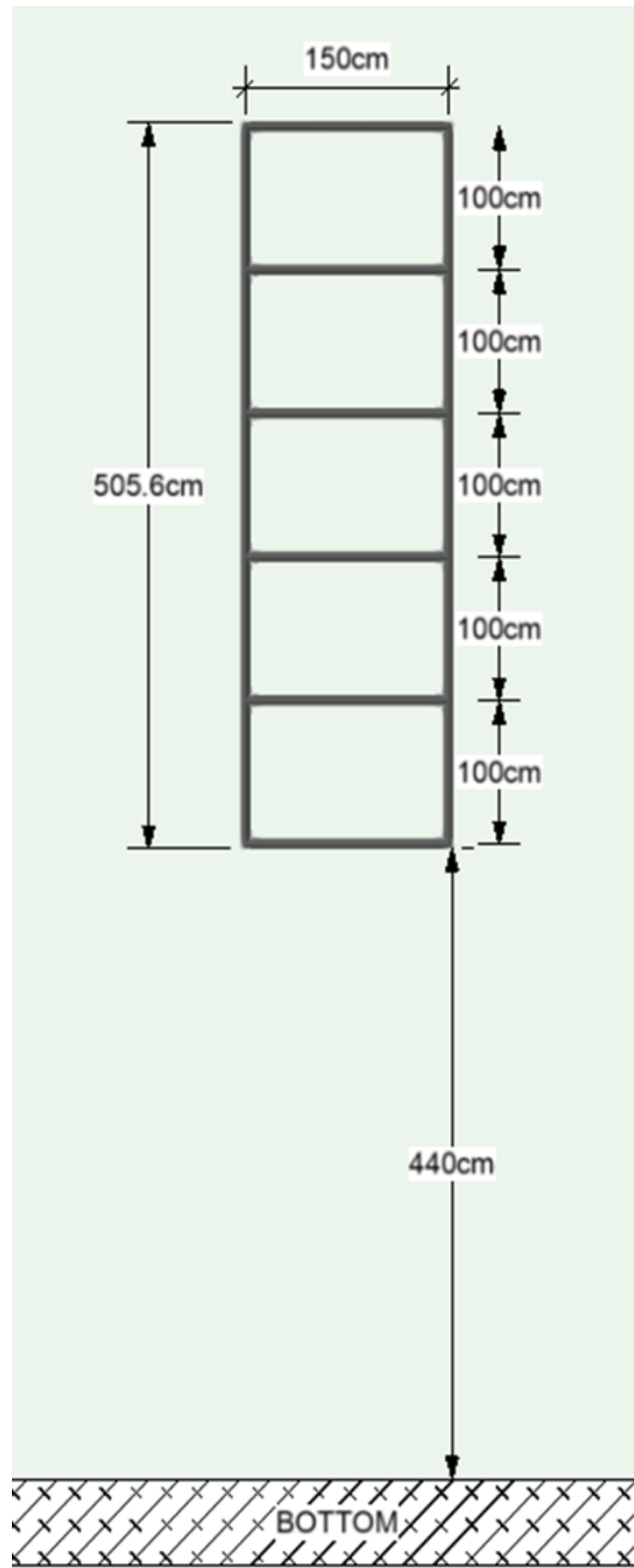


### 3.Ladder

Total 10 Tracked side light ladder, located at both sides wings. 5 mounts on each side.  
Moveable along the up and down stage,  
Please refer to Standard Light Plan

The total weight of each block: 500 kg

Each crossbar weight limit: 100 kg



#### 4. Push-around mast lift

Brand/Type : SNORKEL UL40

Max. platform height : 1219 cm

Max. platform Loads Capacity : 136 kg

Lift weight (with battery) : 492kg

Amount: 2

Note : One person only

**Please read and sign the safety instruction  
before using the lift**



#### Lighting Cable and Accessories

Item	Type	Amount	Storage location
GrandMA3 Node	2 Port	6	Cage trailer
		1	Grid
DP-81II DMX Splitter	8 Port	6	Cage trailer
Chauvet RDMX Splitter 8	2 in Port 8 out Port	3	Cage trailer
Movable Channel box	3kw / 6 Circuits	10	Side stage
Multi-core cable 3kw (With DMX Signal)	2m	20	Grid
	10m	14	Grid
	25m	14	Grid
Multi-core cable 5kw (Harting with DMX Signal)	2m	6	Grid
	10m	6	Grid
	25m	6	Grid
CEE 16A Ex-Cable	1m	40	Cable trailer
	3m	30	Cable trailer
	5m	45	Cable trailer
	10m	50	Cable trailer
	20m	18	Cable trailer
CEE 32A Ex-Cable	20m	10 (5/5)	L/R Gallery

19PIN (male)→ 6 circuits CEE16A (female)	1m	30	Cable trailer
19PIN (female)→ 6 circuits CEE16A (male)	1m	10	Grid
		9	Cable trailer
CEE 16A Y-cord	1m	50	Cable trailer
Multi-core cable ( 19 PIN/2.5mm <sup>2</sup> )	5m	20	Cable trailer
	10m	20	Cage trailer
		10	6F Gallery
	20m	20	Cage trailer
10		6F Gallery	
DMX 5PIN cable	1m	50	Cage trailer
	3m	100	Cage trailer
	5m	20	Cage trailer
	10m	20	Cage trailer
	20m	10	Cage trailer
	30m	10	Cage trailer
	10m	10	Grid
	15m	10	Grid
CEE 16A →PowerCon	Power cord	80	Cable trailer
PowerCon Extension Cables	2m	70	Cable trailer
	3m	60	Cable trailer
	5m	30	Cable trailer
<b>Colour Frame &amp; Fixture Accessories</b>			
Selecon SPX Colour Frame 5.5"	15.8*15.8cm	200	Lighting cabinet
Selecon SPX IRIS		40	Lighting cabinet
Selecon SPX GOBO Holder	B SIZE	60	Lighting cabinet
ETC SourceFour IRIS		12	Lighting cabinet
ROBE T11 Colour Frame 7.2"	20.8cm	120	Lighting cabinet
ROBE T11 Gobo Holder	Gobo size: 26.8mm Image size: 23.5mm	20	Lighting cabinet
ETC Gobo Holder	A SIZE	40	Lighting cabinet
ETC LED Series 3 Lustr X8 10° Colour Frame	35.5*35.5cm	32	Lighting cabinet

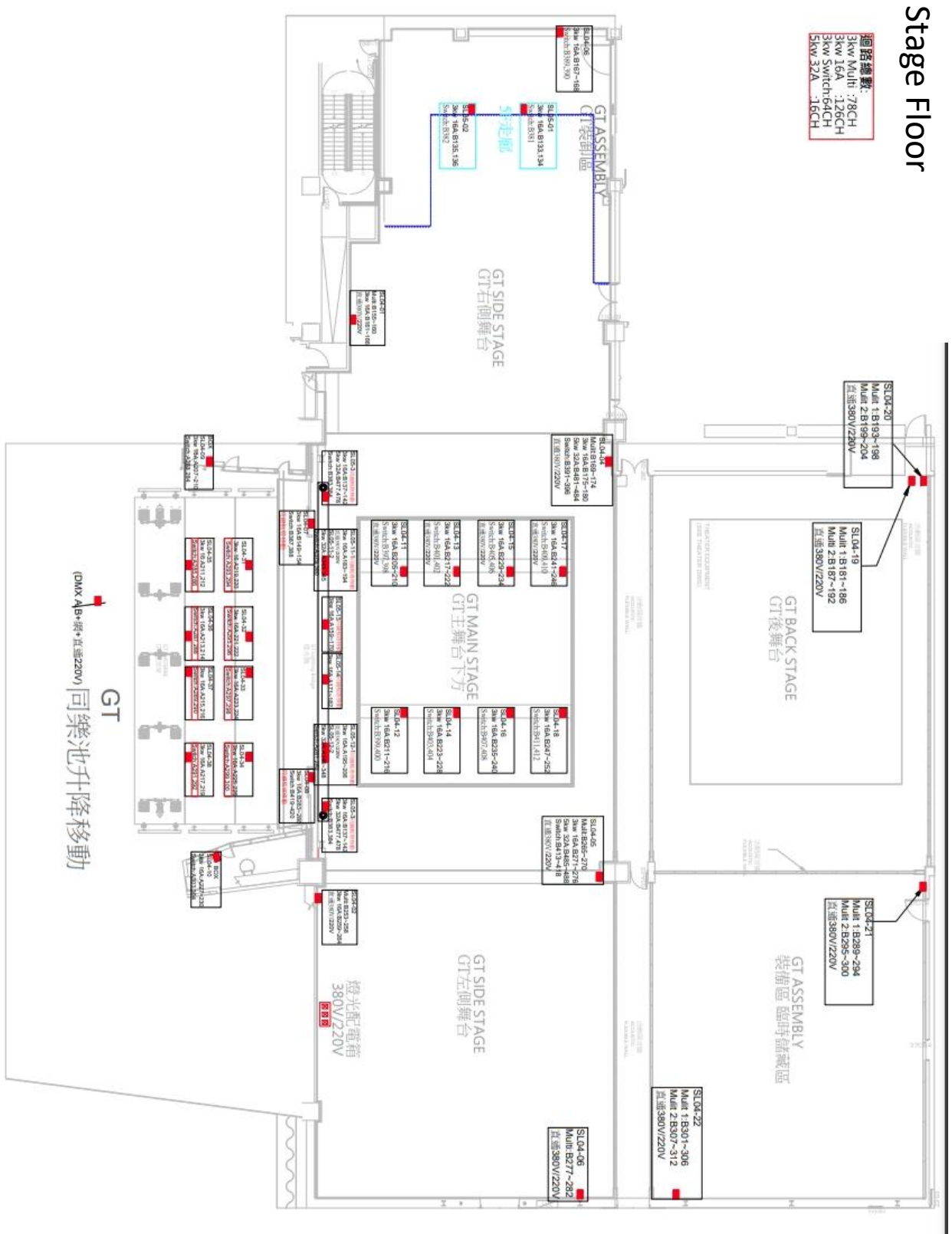
ETC LED Series 3 Lustr X8 14° Colour Frame	25.5*25.5cm	10	Lighting cabinet
ETC LED Series 3 Lustr X8 26°/36° Colour Frame	19*19cm	30	Lighting cabinet
ETC SourceFour 5° Colour Frame 12"	35.5*35.5cm	24	Lighting cabinet
ETC SourceFour 10° Colour Frame 10"	30.5*30.5cm	50	Lighting cabinet
Selecon Arena Fresnel 2 kw Colour Frame 8"	24.5*24.5cm	30	Lighting cabinet
ARRI ST5 FRESNEL 5KW Colour Frame	Ø40.5cm (circle)	11	Stroage Room
PAR-64 Colour Frame 8"	25.5*25.5cm	48	Lighting cabinet
Cyc Selecon Aurora 4-way square	30.5*31cm	80	Lighting cabinet
Top Hat	Full Top Hat	40	Cage trailer
Other Accessories			
BOOM BASE	50*80cm	6	Side Stage
BOOM	6 ft	6	Side Stage
Backlite Base Stand (with adapter)	(H)13cm	30	

\*Backlite Base Stand

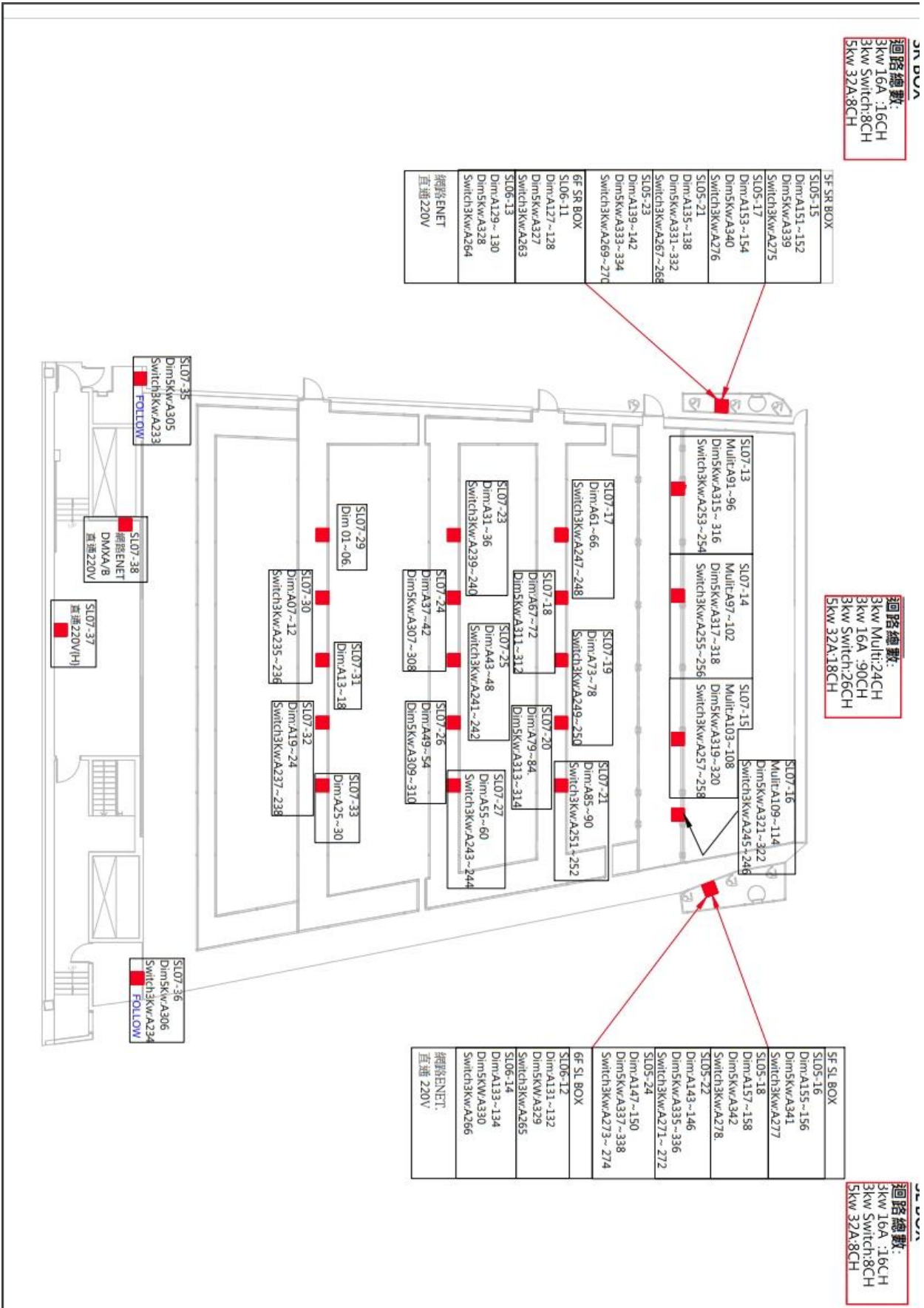


## Dimmer circuits layout chart

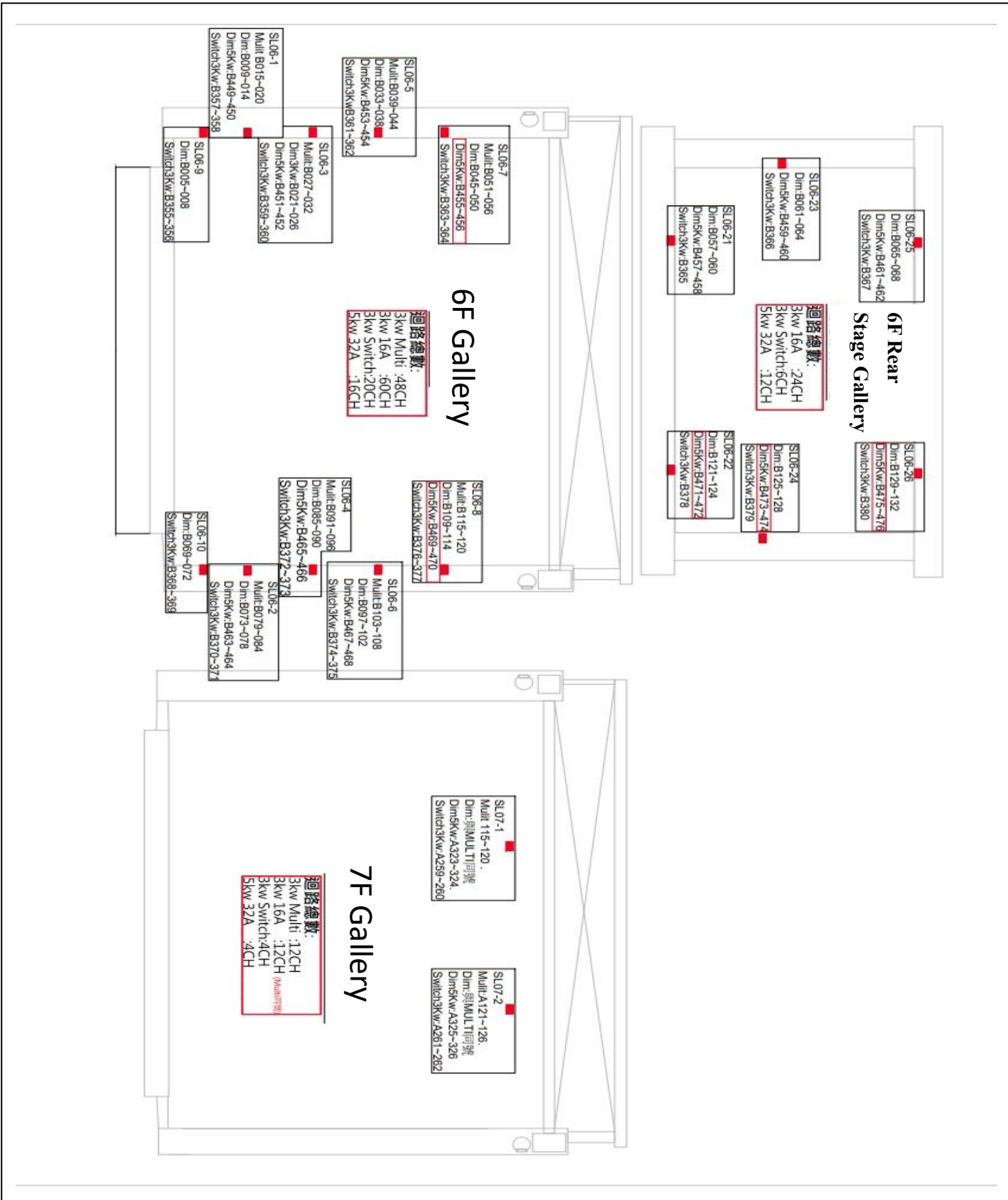
### 1. Stage Floor circuits layout chart (\*red frame represent total circuits)



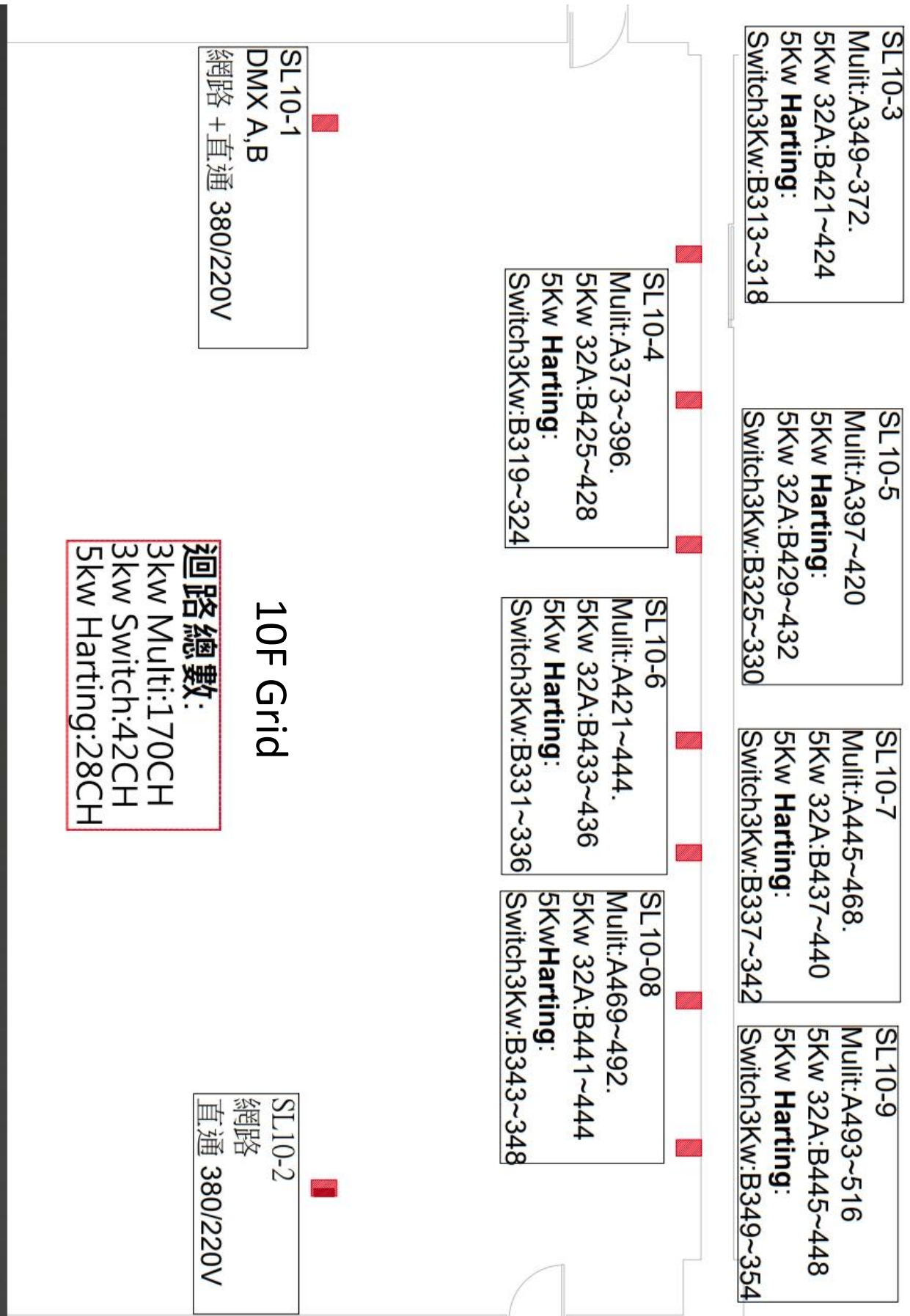
## 2. 7F Catwalk & Lighting Box circuits layout chart



3. 6F&7F layout chart (\*red frame represent total circuits)



4. 10F circuits layout chart



## House Light

MK2 NODE--IP:10.0.10.204

Universe : 20 sACN

### Auditorium

**Ceiling Lamp** : ACME/Stage Blinder IP

4F Orchestra Pit : DIM 20.101~124

4F Auditorium : DIM 20.201~228

5F Fore Auditorium : DIM 20.301~332

5F Back Auditorium : DIM 20.401~432

**Recessed Downlight**

DIM : 9 ( Row 24 ~ 26 )

DIM : 10 ( Row 22 ~ 23 )

**Wall Washer**

Up Stage Right DIM : 15      Down Stage Right DIM : 29 ( Near the SR-Box )

Up Stage Left DIM : 16      Down Stage Left DIM : 30 ( Near the SL-Box )

**SL VIP Balcony**

DIM : 21 ( Recessed DownLight )

DIM : 28 ( Wall Washer )

**SR Think Tank**

DIM : 22 ( Recessed DownLight ) / 27 VIP Box

**Stair Light**

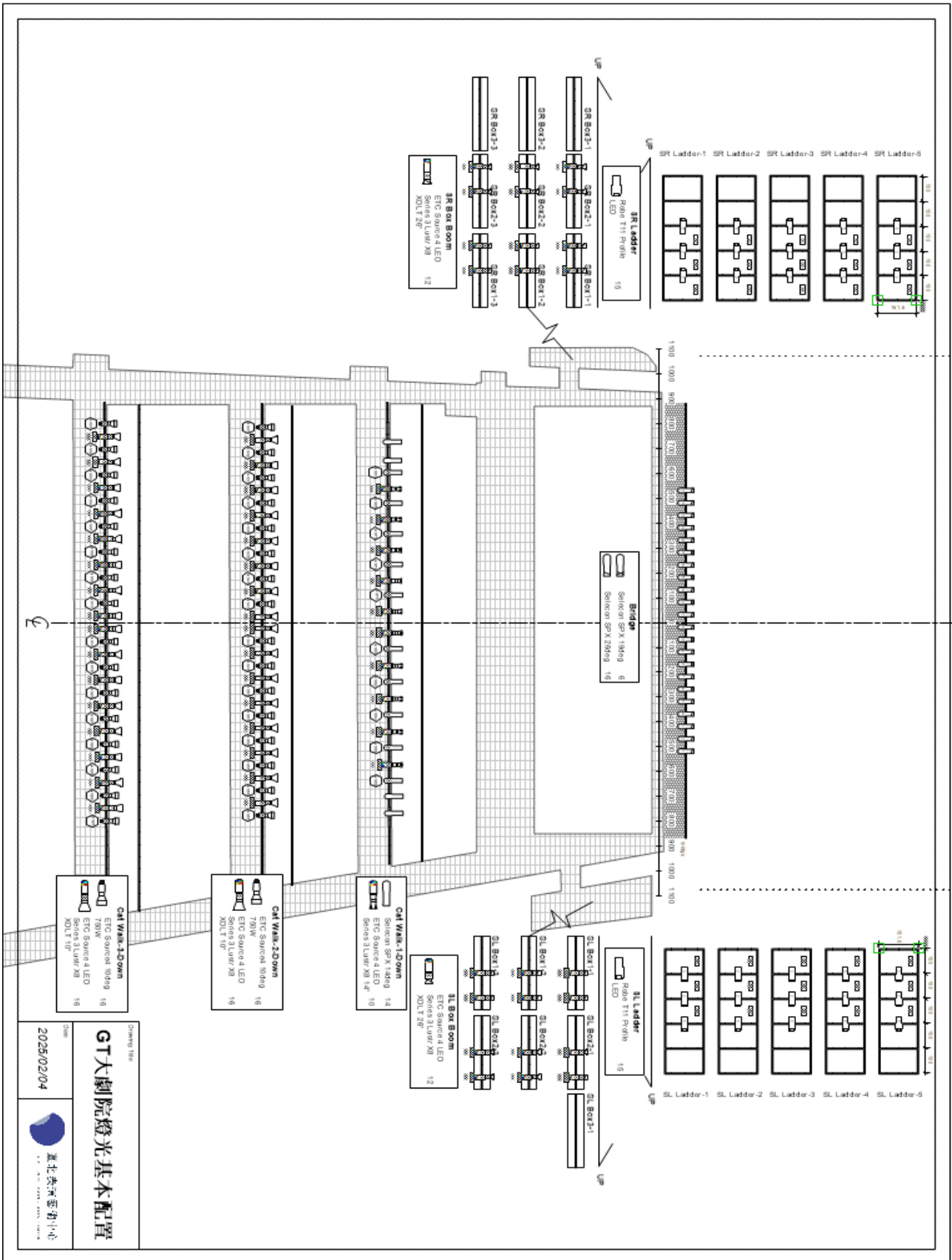
DIM : 7 ( ALL )

**Side Stage Work Light**

SR : B133~136

SL : B277~282

# Standard Light Plan



## Audio Technical Information

### Audio Control Room equipment

Audio Control Room				
NO.	Item	Type	Amount	Note
1	Digital Audio Mixer	MIDAS HD-96	1	Main system
2	I/O Box	MIDAS DL-153	1	Main system
3	Digital Audio Mixer	MIDAS HD-96	1	Backup system
4	I/O Box	MIDAS DL-153	1	Backup system
5	Multimedia Digital Audio Mixer	YAMAHA DM3	1	
6	Nearfield Monitor Speaker	Dynaudio BM12-A	2	
7	CD/USB Player	NUMARK MP103USB	1	
8	Microphone Isolator	Behringer MS-8000	2	
PS: Please prepare your own mixer if needed to connect with the house audio mixer Midas HD-96				

### Loudspeaker System

Loudspeaker System				
NO.	Item	Type	Amount	Note
1	FOH-L	K&F Sequenza 10N	12	Horizontal 77° (W x H x D)795 x 303 x 491 mm Weight : 34 kg
2	FOH-Center	K&F Sequenza 10N + 10W	9	Horizontal 77° (W x H x D)795 x 303 x 491 mm Weight : 34 kg
3	FOH-R	K&F Sequenza 10N	12	Horizontal 77° (W x H x D)795 x 303 x 491 mm Weight : 34 kg
4	SUB-L	K&F Sequenza 10B	4	2*15" omni (W x H x D)807 x 470 x 991 mm Weight : 62 kg

5	SUB-R	K&F Sequenza 10B	4	2*15" omni (W x H x D)807 x 470 x 991 mm Weight : 62 kg
6	STALL-L	K&F CA-1215-9	2	90° x 50° (W x H x D)434 x 680 x 412 mm Weight : 36.4 kg
7	STALL-R	K&F CA-1215-9	2	90° x 50° (W x H x D)434 x 680 x 412 mm Weight : 36.4 kg
8	5F Balcony Delay	Meyer Sound MM-4XP	8	80° x 80° (W x H x D) 103 x 103 x 145 mm Weight 1.9 kg
9	7F Delay	K&F Gravis 12N	8	65° x 50° (W x H x D)350 x 596 x 318 mm

### Stage Monitor System

Stage Monitor System				
NO.	Item	Type	Amount	Note
1	SR Ladder (Movable)	K&F Gravis 12N	3	65° x 50° (W x H x D) 350 x 596 x 318 mm Weight: 17.8 kg
2	SL Ladder (Movable)	K&F Gravis 12N	3	65° x 50° (W x H x D) 350 x 596 x 318 mm Weight: 17.8 kg
3	Stage Monitor (Movable)	K&F Gravis 12N	8	65° x 50° (W x H x D) 350 x 596 x 318 mm Weight: 17.8 kg <b>chargeable items</b>
4	Power Amplifier	UNIKA PWM-10000Q 4ch	1	<b>chargeable items</b>

## Microphone

<b>Microphone</b>				
NO.	Item	Type	Amount	Note
1	Wireless Microphone Receiver	MIPRO ACT-747	1	Permanent configuration
2	Wireless Handheld Microphone	MIPRO ACT-7H	4	Not for performance use
3	Microphone	SHURE SM-58	6	chargeable items
4	Boundary Microphone	SHURE MX392/C	8	chargeable items
5	Condenser Microphone	DPA-4011A	8	chargeable items

## Intercom & backstage communication system

<b>Intercom &amp; backstage communication system</b>				
NO.	Item	Type	Amount	Note
1	Beltpack	Clear-Com HBP-2X	16	Please do not put tapes on the intercom to avoid causing damage
2	(Single-ear) headsets	Clear-Com CC-300	16	
3	Wireless Beltpack (With headsets)	Clear-Com FS II-BP19-X4-EU + CC-300	6	

## Video equipment

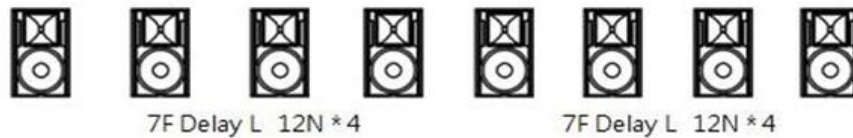
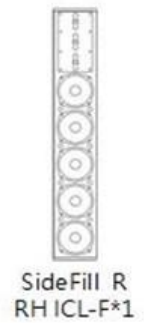
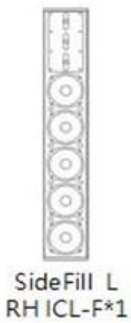
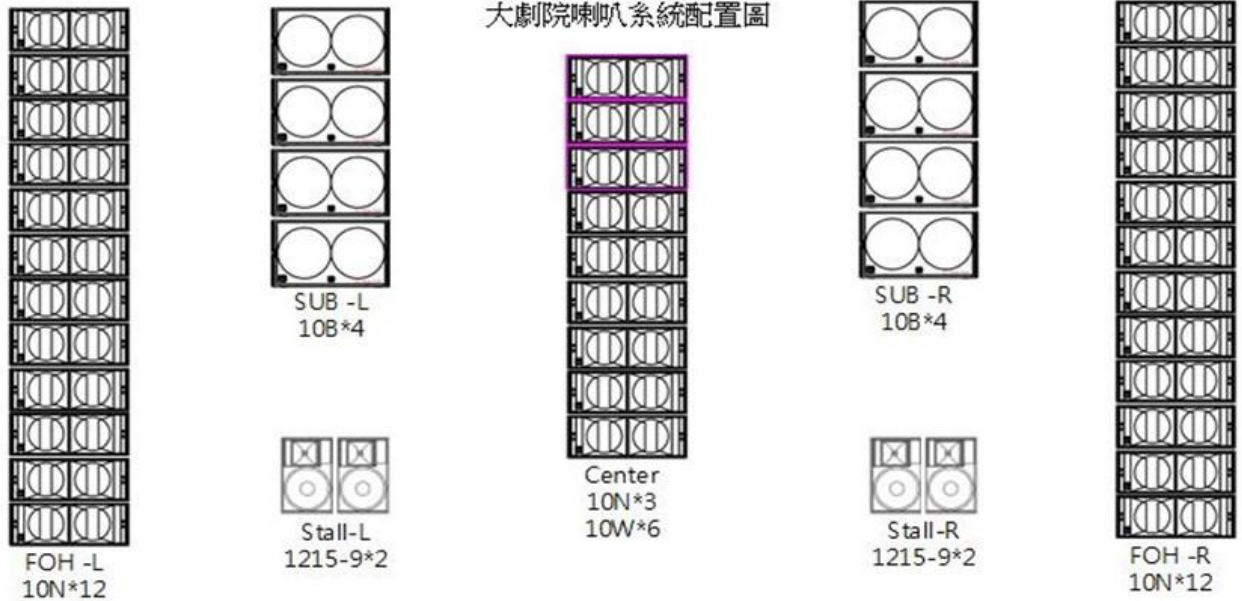
<b>Video equipment</b>				
NO	Item	Type	Amount	Note
1	Infrared camera (For Conductor Use)	CDOUBLES TWA-CE2425N4.2X	2	chargeable items
2	32" CCTV (For Orchestra Use)	SAMSUNG UA32N4000AWZW	4	chargeable items
3	42" CCTV (For Orchestra Use)	SAMSUNG UA43TU8000WXZW	3	*One is fixed on the 6F auditorium wall chargeable items

## Cable & Audio Accessories

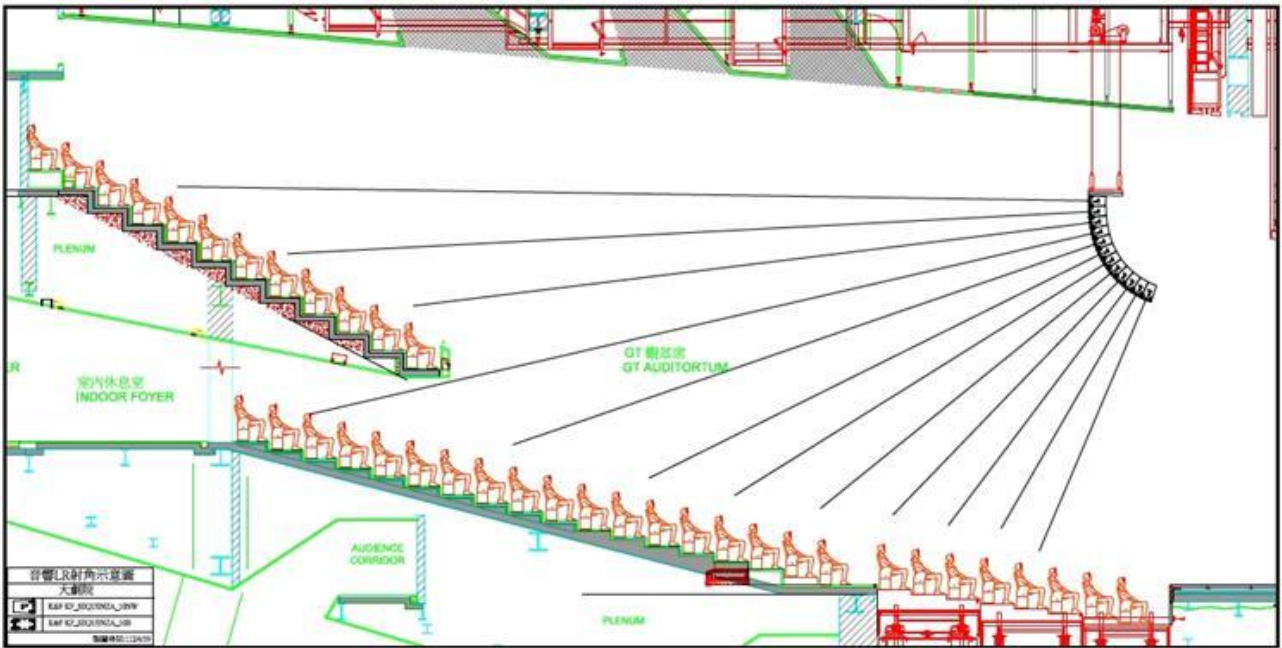
Cable & Stand Accessories				
NO	Item	Type	Amount	Note
1	Orchestra music stand	K&M 11965-000-55-black	60	
2	Music stand light	K&M 12295-018-55-black	65	
3	Instrument Tray	K&M 12218-000-55-black	60	
4	Orchestra conductor stand desk	K&M 12338-000-55-black	2	
5	Mic Stand	CNBear K308B	16	
6	Microphone Stand (two-boom)	K&M 25200-300-55	10	Please bring your own 3/8 to 5/8 thread adapter
7	Microphone stand (Low-level)	K&M 25900-300-55	10	Please bring your own 3/8 to 5/8 thread adapter
8	Microphone stand (Round Base)	K&M 26145-300-55	10	Please bring your own 3/8 to 5/8 thread adapter
9	Microphone stand (Low/Round Base)	K&M 25960-300-55	10	Please bring your own 3/8 to 5/8 thread adapter
10	Speaker Stand	SoundKing SB315	8	
11	Speaker Stand	ST168B	8	
12	Microphone XLR Cable	5M	10	
13	Microphone XLR Cable	10M	10	
14	Microphone XLR Cable	20M	10	
15	4P-Speakon	5M	5	
16	4P-Speakon	10M	5	
17	4P-Speakon	20M	10	
18	3mm/3C Power Cord 5M	5M	5	
19	3mm/3C Power Cord 15M	15M	5	
20	Power Strip		5	

# Speaker System Dispose Chart

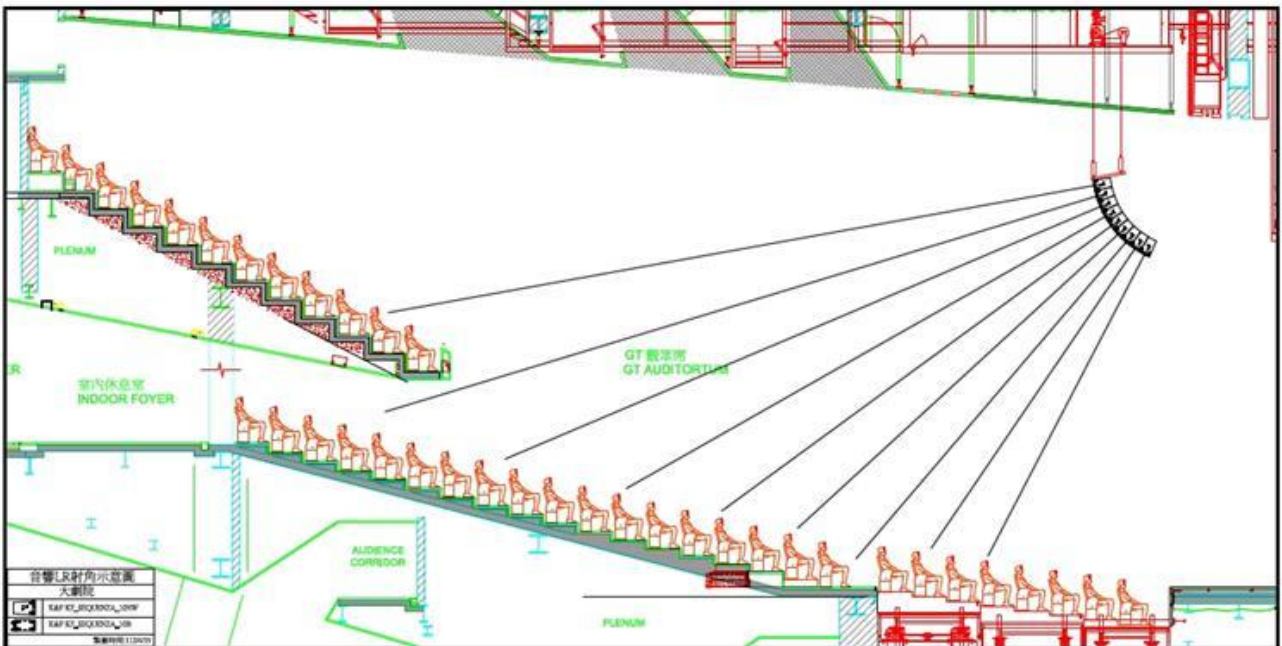
臺北表演藝術中心  
大劇院喇叭系統配置圖



GT Input Channel List		
Channel	Input	備註
Ch1	FOH Left	左側主陣列喇叭
Ch2	Center Cluster	中置陣列喇叭
Ch3	FOH Right	右側主陣列喇叭
Ch4	Fly_Sub_L	左側重低音
Ch5	Fly_Sub_R	右側重低音
Ch6	Stall_L	左側台口音場補償喇叭
Ch7	Stall_R	右側台口音場補償喇叭
Ch8	Front Fill	台唇音場補償低音喇叭
Ch9	Delay_L	7樓左側延遲喇叭
Ch10	Delay_R	7樓右側延遲喇叭
Ch11	Balcony	5樓樓座下延遲喇叭
Ch12	Stage 1	舞台監聽~下舞台兩側
Ch13	Stage 2	舞台監聽~中舞台兩側
Ch14	Stage 3	舞台監聽~上舞台兩側
Ch15	Side Fill / L	舞台監聽~舞台鏡框左側
Ch16	Side Fill / R	舞台監聽~舞台鏡框右側

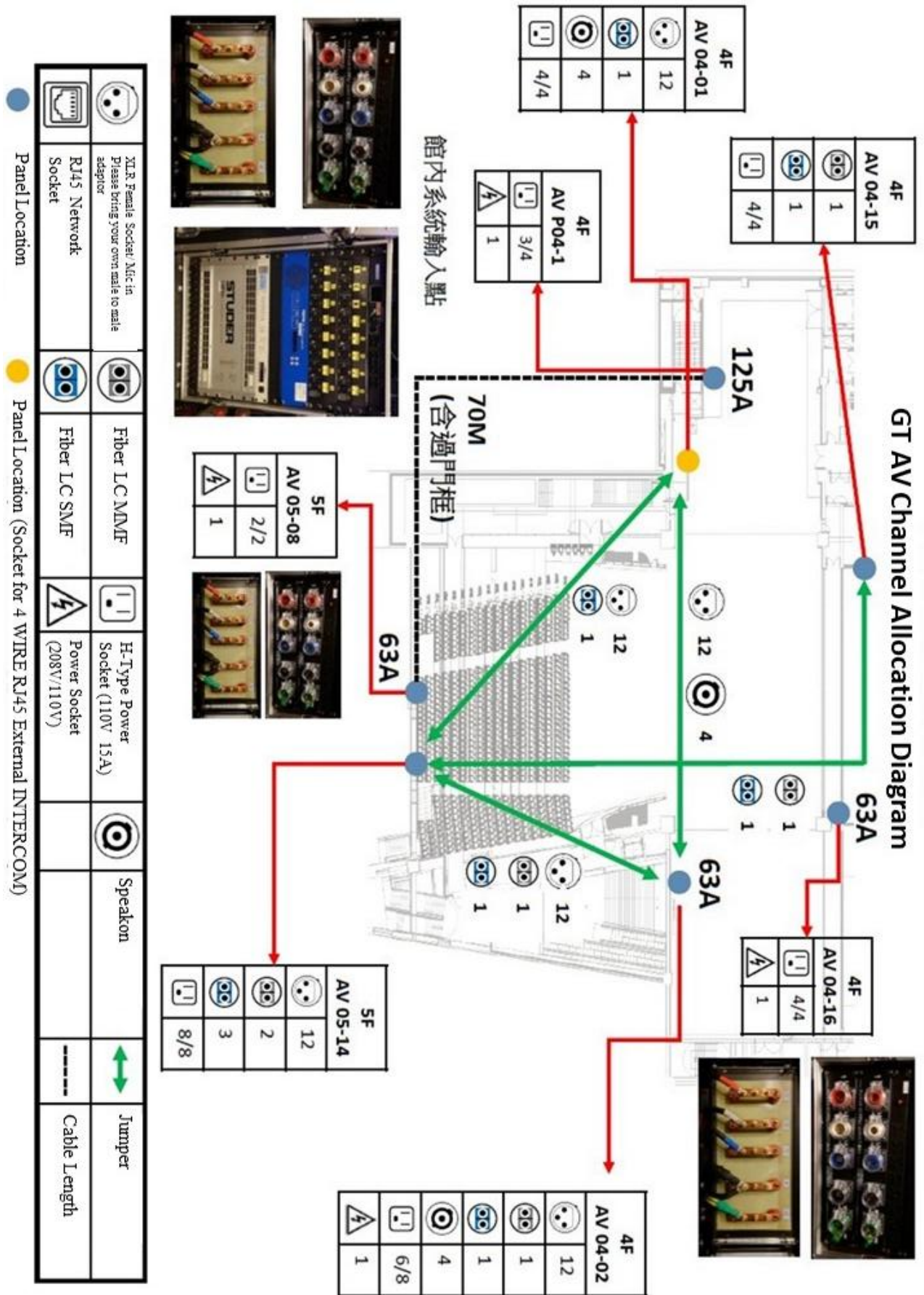


左右主線陣列喇叭投射角度示意圖



中置線陣列喇叭投射角度示意圖

# Channel Dispose Chart



# Panel Layout

## GT Panel Layout



Mic in

Control Panel		Down Stage Right		Down Stage Left	
Panel	NO.	Panel	NO.	Panel	NO.
AV 05-14	1-12	AV 04-01	1-12	AV 04-02	1-12



Speakon

Control Panel		Down Stage Right		Down Stage Left	
Panel	NO.	Panel	NO.	Panel	NO.
		AV 04-01	1-4	AV 04-02	1-4

## Other Equipments & Dressing Room

### Other Equipments

No.	Item	Dimension	Amount	Note
1	Aluminum Stage Deck	178cm*95cm	4	*With two-dimensional legs suitable for front and rear rows
2	Back Side Chair (Black)		80	
3	Folding table	180cm*75cm	30	
4	Steamers		3	
5	Iron + sleeve board		1 set	
6	Dressing Mirror		3	
7	Hanger		100	
8	Sewing Machine		1	
9	Hair Dryer		3	
10	Hanger Cart (Side Stage)		7	

### List of Dressing room

Room No.	Room Name	Capacity	Toilet	Shower	Note
<b>3F (Total : 12 / Capacity : 59 )</b>					
<b>301</b>	(GT) Personal	<b>1</b>	1	1	
<b>302</b>	(GT) Personal	<b>1</b>	1	1	
<b>303</b>	(GT) Group (Medium)	<b>5</b>	1	1	
<b>304</b>	(GT) Group (Medium)	<b>5</b>	1	1	
<b>305</b>	(GT) Personal	<b>1</b>	1	1	
<b>306</b>	(GT) Personal	<b>1</b>	1	1	
<b>307</b>	(GT) Personal	<b>1</b>	1	1	
<b>308</b>	(GT) Group (Large)	<b>16</b>	none	none	
<b>309</b>	(GT) Personal	<b>1</b>	1*	1	Accessible toilet
<b>310</b>	(GT) Personal	<b>1</b>	1*	1	Accessible toilet
<b>311</b>	(GT) Group (Large)	<b>14</b>	none	none	
<b>312</b>	(GT) Group (Large)	<b>12</b>	none	none	

<b>4F (Total : 2 / Capacity : 3 ) (Subject to availability)</b>					
<b>401</b>	(BB) Personal	<b>2</b>	1*	1	Accessible toilet
<b>402</b>	(BB) Personal	<b>1</b>	none	none	
<b>5F(Total : 6 / Capacity : 21 ) (Subject to availability)</b>					
<b>501</b>	(BB) Personal	<b>1</b>	1	1	
<b>502</b>	(BB) Personal	<b>1</b>	1	1	
<b>503</b>	(BB) Group (Medium)	<b>5</b>	1	1	
<b>504</b>	(BB) Group (Medium)	<b>5</b>	1	1	Shower without Cubicle
<b>505</b>	(BB) Personal	<b>1</b>	1	1	
<b>506</b>	(BB) Group (Medium)	<b>8</b>	none	none	
<b>6F (Total : 9 / Capacity : 74 ) (Subject to availability)</b>					
<b>601</b>	(GP) Group (Medium)	<b>9</b>	none	none	
<b>602</b>	(GP) Group (Medium)	<b>5</b>	none	none	
<b>603</b>	(GP) Group (Medium)	<b>4</b>	none	none	
<b>604</b>	(GP) Group (Large)	<b>17</b>	1	3	
<b>605</b>	(GP) Group (Large)	<b>19</b>	1	3	
<b>606</b>	(GP) Group (Medium)	<b>5</b>	1	1	
<b>607</b>	(GP) Group (Medium)	<b>5</b>	1*	1	Accessible toilet
<b>608</b>	(GP) Group (Medium)	<b>6</b>	none	none	Near Orchestra Pit With wash basin *1
<b>609</b>	(GP) Group (Medium)	<b>4</b>	none	none	Near Orchestra Pit With wash basin *1
<b>7F (Total : 6 / Capacity : 21 ) (Subject to availability)</b>					
<b>701</b>	(GP) Personal	<b>1</b>	1	1	
<b>702</b>	(GP) Personal	<b>1</b>	1	1	
<b>703</b>	(GP) Group (Medium)	<b>5</b>	1	1	
<b>704</b>	(GP) Group (Medium)	<b>5</b>	1	1	
<b>705</b>	(GP) Personal	<b>1</b>	1	1	
<b>706</b>	(GP) Group (Medium)	<b>8</b>	none	none	