

SR Ladder-1 SR Ladder-2 SR Ladder-3 SR Ladder-4 SR Ladder-5

SL Ladder-1 SL Ladder-2 SL Ladder-3 SL Ladder-4 SL Ladder-5

SR Ladder
Robe T11 Profile LED 15

SL Ladder
Robe T11 Profile LED 15

SR Box Boom
ETC Source 4 LED Series 3 Lustr X8 XDLT 26° 12

SL Box Boom
ETC Source 4 LED Series 3 Lustr X8 XDLT 26° 12

Cat Walk-1-Down
Selecon SPX 14deg 14
ETC Source 4 LED Series 3 Lustr X8 14° 10

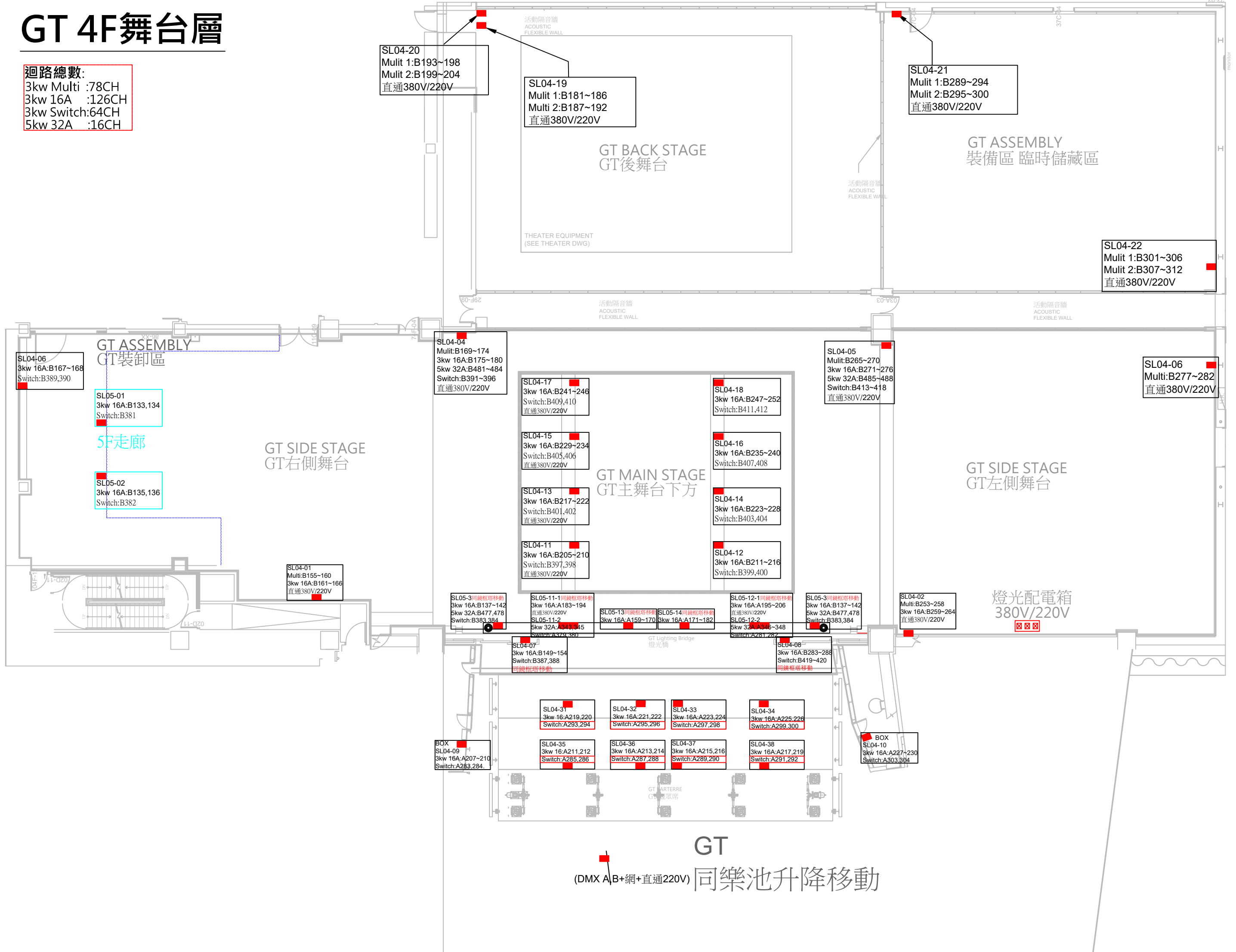
Cat Walk-2-Down
ETC Source4 10deg 750W 16
ETC Source 4 LED Series 3 Lustr X8 XDLT 10° 16

Cat Walk-3-Down
ETC Source4 10deg 750W 16
ETC Source 4 LED Series 3 Lustr X8 XDLT 10° 16

GT 4F舞台層

迴路總數:

3kw Multi :78CH
 3kw 16A :126CH
 3kw Switch:64CH
 5kw 32A :16CH



GT
 (DMX A/B+網+直通220V) 同樂池升降移動

SR BOX

迴路總數:
 3kw 16A :16CH
 3kw Switch:8CH
 5kw 32A:8CH

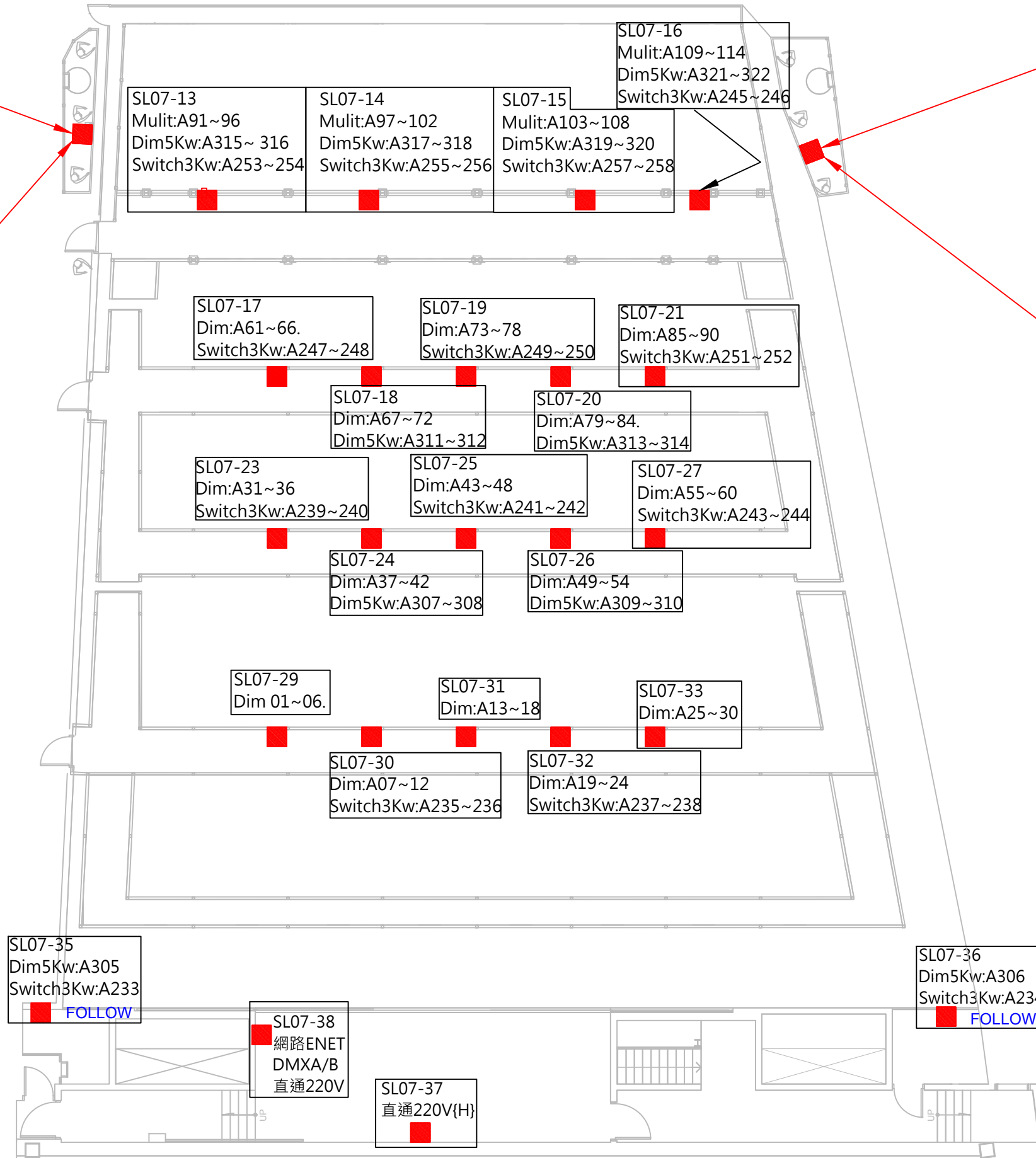
7樓貓道

迴路總數:
 3kw Multi:24CH
 3kw 16A :90CH
 3kw Switch:26CH
 5kw 32A:18CH

SL BOX

迴路總數:
 3kw 16A :16CH
 3kw Switch:8CH
 5kw 32A:8CH

5F SR BOX	
SL05-15	Dim:A151~152 Dim5Kw:A339 Switch3Kw:A275
SL05-17	Dim:A153~154 Dim5Kw:A340 Switch3Kw:A276
SL05-21	Dim:A135~138 Dim5Kw:A331~332 Switch3Kw:A267~268
SL05-23	Dim:A139~142 Dim5Kw:A333~334 Switch3Kw:A269~270
6F SR BOX	
SL06-11	Dim:A127~128 Dim5Kw:A327 Switch3Kw:A263
SL06-13	Dim:A129~130 Dim5Kw:A328 Switch3Kw:A264
網路ENET 直通220V	



5F SL BOX	
SL05-16	Dim:A155~156 Dim5Kw:A341 Switch3Kw:A277
SL05-18	Dim:A157~158 Dim5Kw:A342 Switch3Kw:A278.
SL05-22	Dim:A143~146 Dim5Kw:A335~336 Switch3Kw:A271~272
SL05-24	Dim:A147~150 Dim5Kw:A337~338 Switch3Kw:A273~274
6F SL BOX	
SL06-12	Dim:A131~132 Dim5KW:A329 Switch3Kw:A265
SL06-14	Dim:A133~134 Dim5KW:A330 Switch3Kw:A266
網路ENET. 直通 220V	

SL06-25
Dim:B065~068
Dim5Kw:B461~462
Switch3Kw:B367

SL06-26
Dim:B129~132
Dim5Kw:B475~476
Switch3Kw:B380

6樓後舞台廊道

迴路總數:
3kw 16A :24CH
3kw Switch:6CH
5kw 32A :12CH

SL06-23
Dim:B061~064
Dim5Kw:B459~460
Switch3Kw:B366

SL06-24
Dim:B125~128
Dim5Kw:B473~474
Switch3Kw:B379

SL06-21
Dim:B057~060
Dim5Kw:B457~458
Switch3Kw:B365

SL06-22
Dim:B121~124
Dim5Kw:B471~472
Switch3Kw:B378

SL06-7
Mulit:B051~056
Dim:B045~050
Dim5Kw:B455~456
Switch3Kw:B363~364

GT 6樓廊道

迴路總數:
3kw Multi :48CH
3kw 16A :60CH
3kw Switch:20CH
5kw 32A :16CH

SL06-8
Mulit:B115~120
Dim:B109~114
Dim5Kw:B469~470
Switch3Kw:B376~377

SL06-5
Mulit:B039~044
Dim:B033~038
Dim5Kw:B453~454
Switch3Kw:B361~362

SL06-6
Mulit:B103~108
Dim:B097~102
Dim5Kw:B467~468
Switch3Kw:B374~375

SL06-3
Mulit:B027~032
Dim3Kw:B021~026
Dim5Kw:B451~452
Switch3Kw:B359~360

SL06-4
Mulit:B091~096
Dim:B085~090
Dim5Kw:B465~466
Switch3Kw:B372~373

SL06-1
Mulit B015~020
Dim:B009~014
Dim5Kw:B449~450
Switch3Kw:B357~358

SL06-2
Mulit:B079~084
Dim:B073~078
Dim5Kw:B463~464
Switch3Kw:B370~371

SL06-9
Dim:B005~008
Switch3Kw:B355~356

SL06-10
Dim:B069~072
Switch3Kw:B368~369

SL07-1
Mulit 115~120
Dim:與MULTI同號
Dim5Kw:A323~324
Switch3Kw:A259~260

SL07-2
Mulit:A121~126
Dim:與MULTI同號
Dim5Kw:A325~326
Switch3Kw:A261~262

GT 7樓後廊道

迴路總數:
3kw Multi :12CH
3kw 16A :12CH (Multi同號)
3kw Switch:4CH
5kw 32A :4CH

SL10-3
Mulit:A349~372.
5Kw 32A:B421~424
5Kw **Harting:**
Switch3Kw:B313~318

SL10-5
Mulit:A397~420
5Kw **Harting:**
5Kw 32A:B429~432
Switch3Kw:B325~330

SL10-7
Mulit:A445~468.
5Kw 32A:B437~440
5Kw **Harting:**
Switch3Kw:B337~342

SL10-9
Mulit:A493~516
5Kw 32A:B445~448
5Kw **Harting:**
Switch3Kw:B349~354

SL10-4
Mulit:A373~396.
5Kw 32A:B425~428
5Kw **Harting:**
Switch3Kw:B319~324

SL10-6
Mulit:A421~444.
5Kw 32A:B433~436
5Kw **Harting:**
Switch3Kw:B331~336

SL10-08
Mulit:A469~492.
5Kw 32A:B441~444
5Kw**Harting:**
Switch3Kw:B343~348

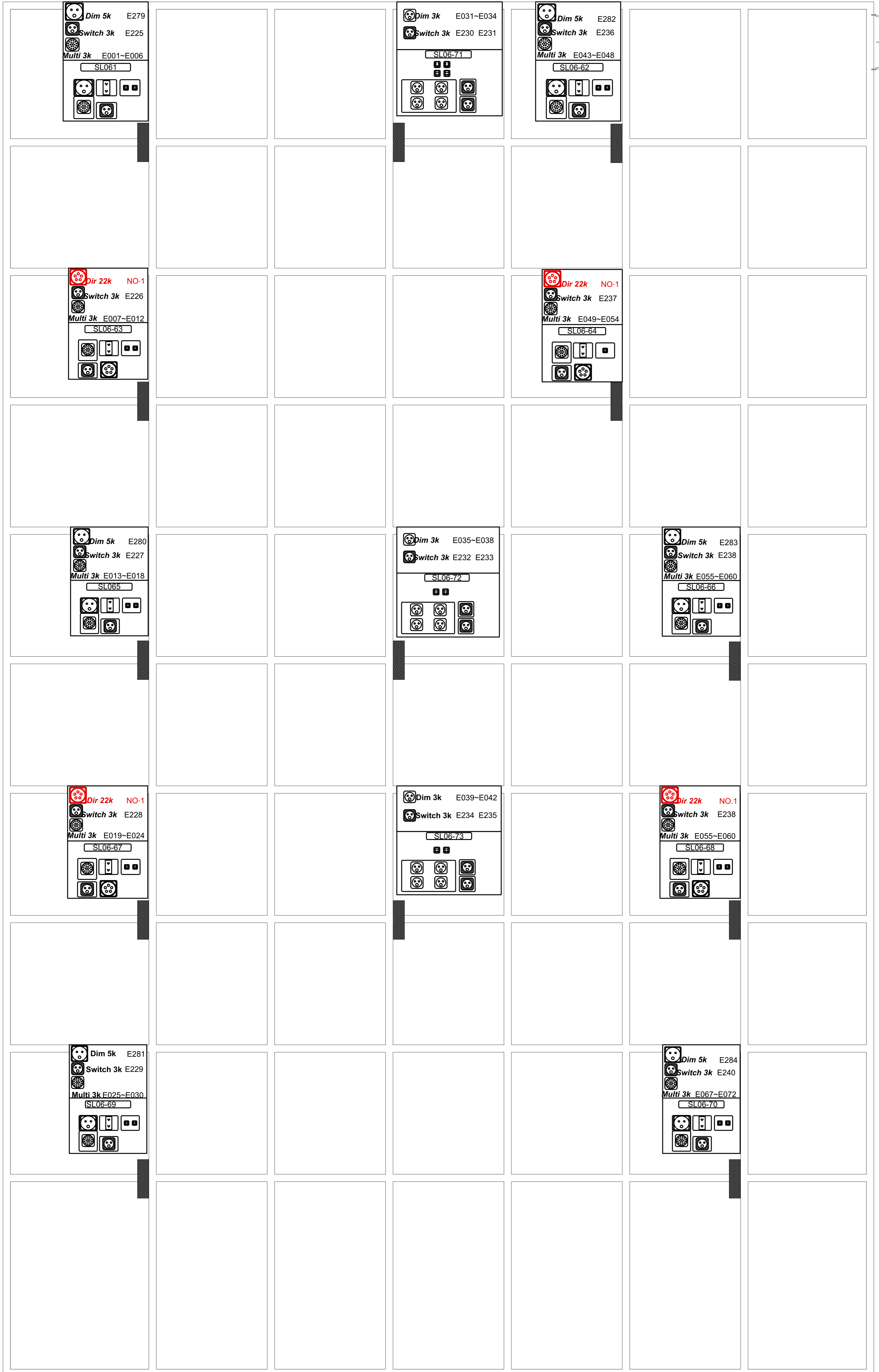
SL10-1
DMX A,B
網路 + 直通 380/220V

GT10樓頂棚

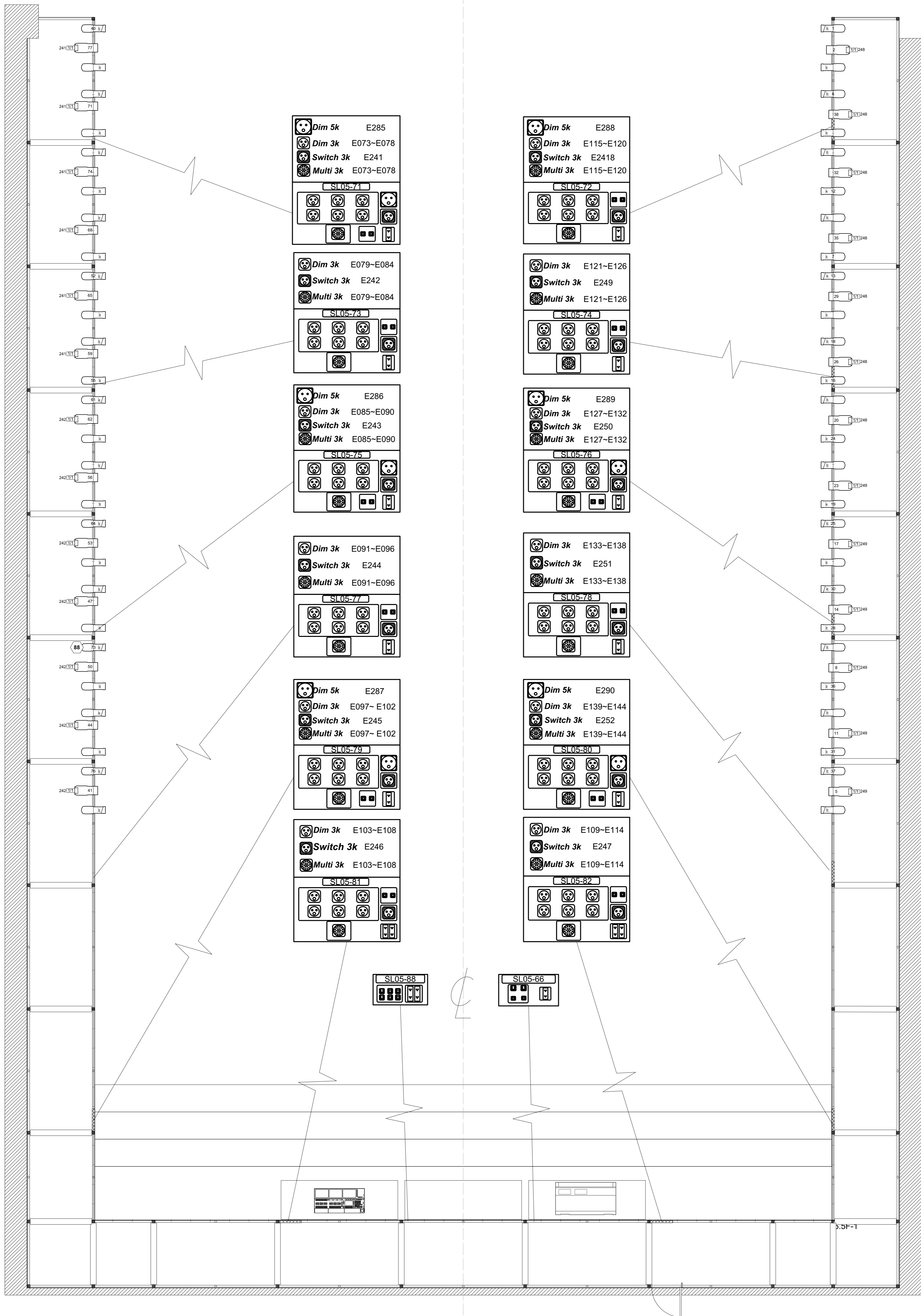
迴路總數:
3kw Multi:170CH
3kw Switch:42CH
5kw Harting:28CH

SL10-2
網路
直通 380/220V

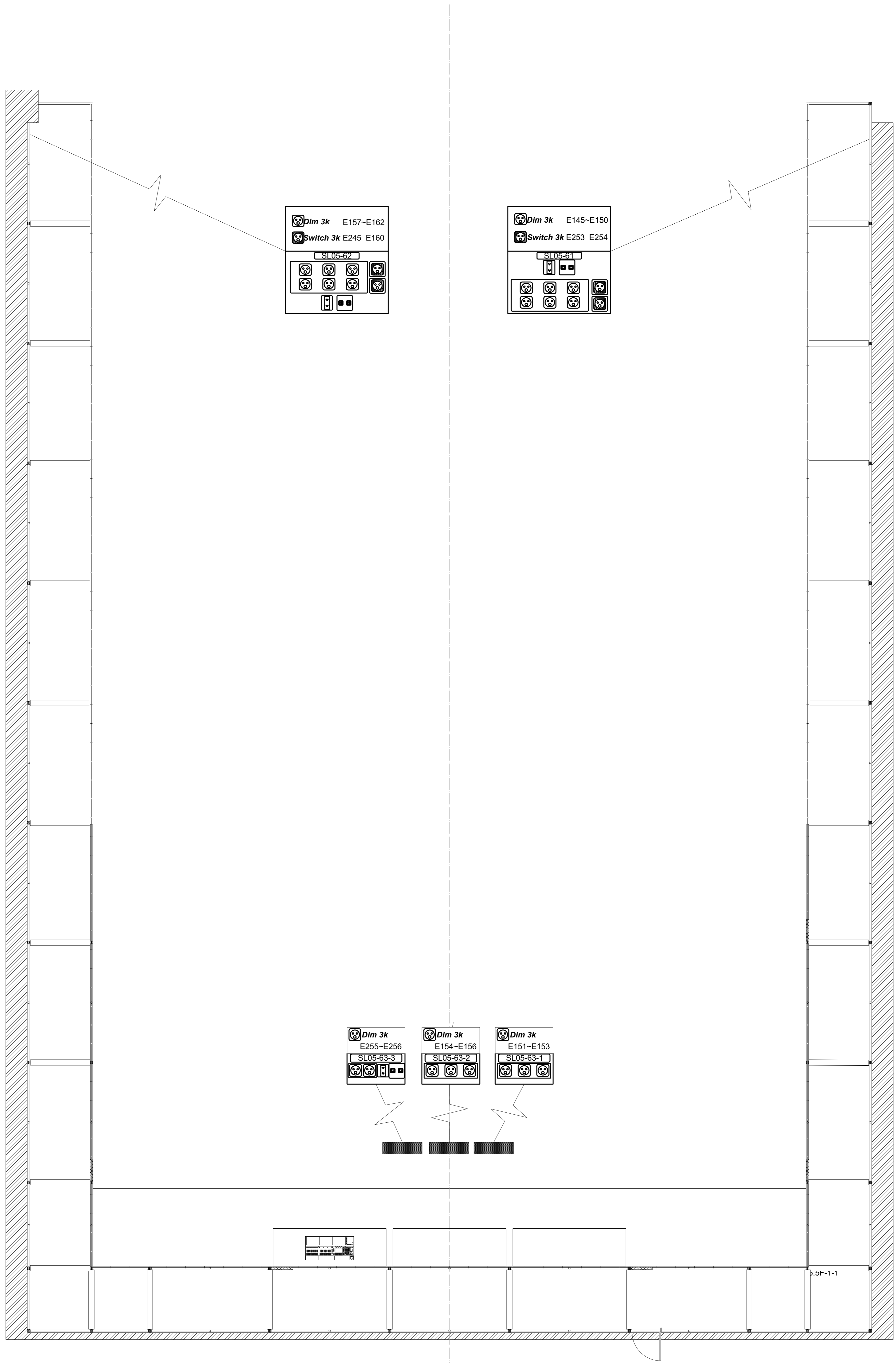
BB藍盒子劇場 6F



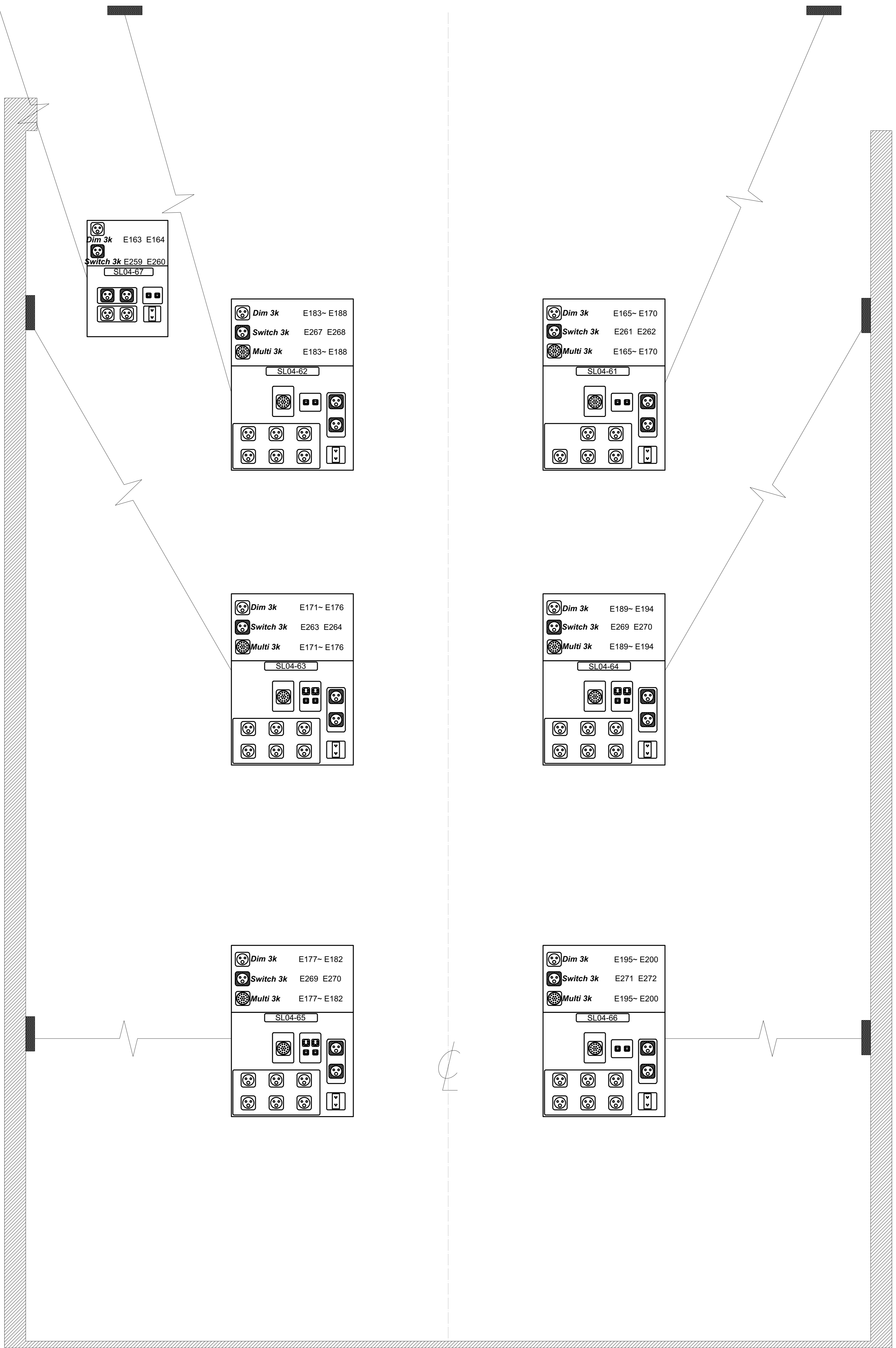
BB藍盒子劇場 5F工作廊道



BB藍盒子劇場 5F



BB藍盒子劇場 4F



BB藍盒子劇場 3F

